

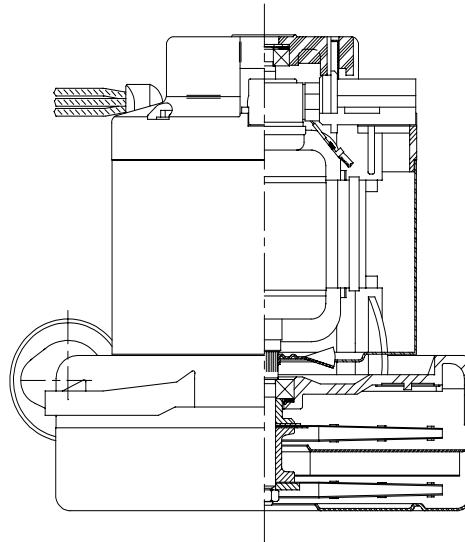


DESCRIPTION

- Two stages
- 120 volts
- 7.2"/183 mm diameter
- Double ball bearings
- Single speed
- Tangential bypass discharge
- Thermoset fan end bracket
- Thermoset commutator bracket

DESIGN APPLICATION

- Equipment operating in environments requiring separation of working air from motor ventilating air
- Designed to handle clean, dry, filtered air only



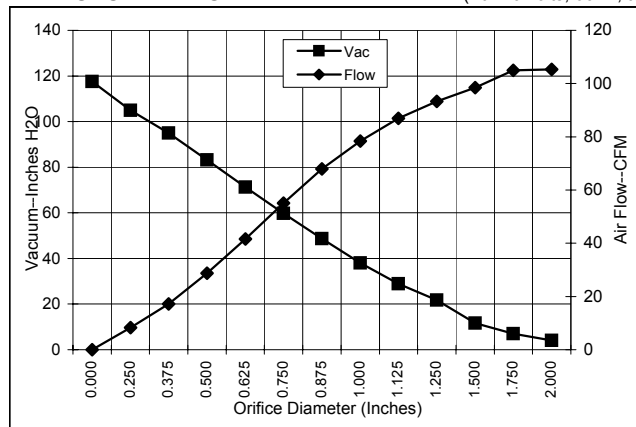
SPECIAL FEATURES

- Suitable for 120 volt AC operation, 50/60 Hz
- UL recognized, category PRGY2 (E47185)
- Skeleton frame design
- Provision for grounding
- The Lamb vacuum motor line offers a wide range of performance levels to meet design needs

TYPICAL MOTOR PERFORMANCE.*

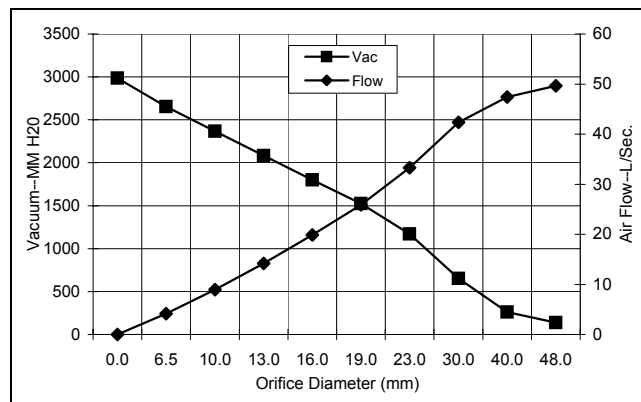
(At 120 volts, 60Hz, test data is corrected to standard conditions of 29.92 Hg, 68° F.)

ASTM DATA



Orifice (Inches)	Amps	Watts (In)	RPM	Vac (In.H ₂ O)	Flow (CFM)	Air Watts
2.000	13.3	1464	16470	4.1	105.3	50.3
1.750	13.3	1464	16460	7.0	105.0	86
1.500	13.3	1466	16400	11.7	98.5	135.3
1.250	13.3	1468	16450	21.8	93.3	238.7
1.125	13.2	1465	16450	28.9	86.9	295
1.000	13.1	1447	16570	38.0	78.4	349.2
0.875	12.8	1414	16760	48.7	67.9	388.1
0.750	12.3	1366	17150	59.8	55.1	386.8
0.625	11.6	1296	17750	71.3	41.6	347.9
0.500	10.7	1203	18650	83.2	28.7	279.9
0.375	9.8	1108	19650	94.9	17.2	191.9
0.250	8.8	1008	20740	105.0	8.3	102.7
0.000	8.1	928	21770	117.6	0.0	0

METRIC DATA



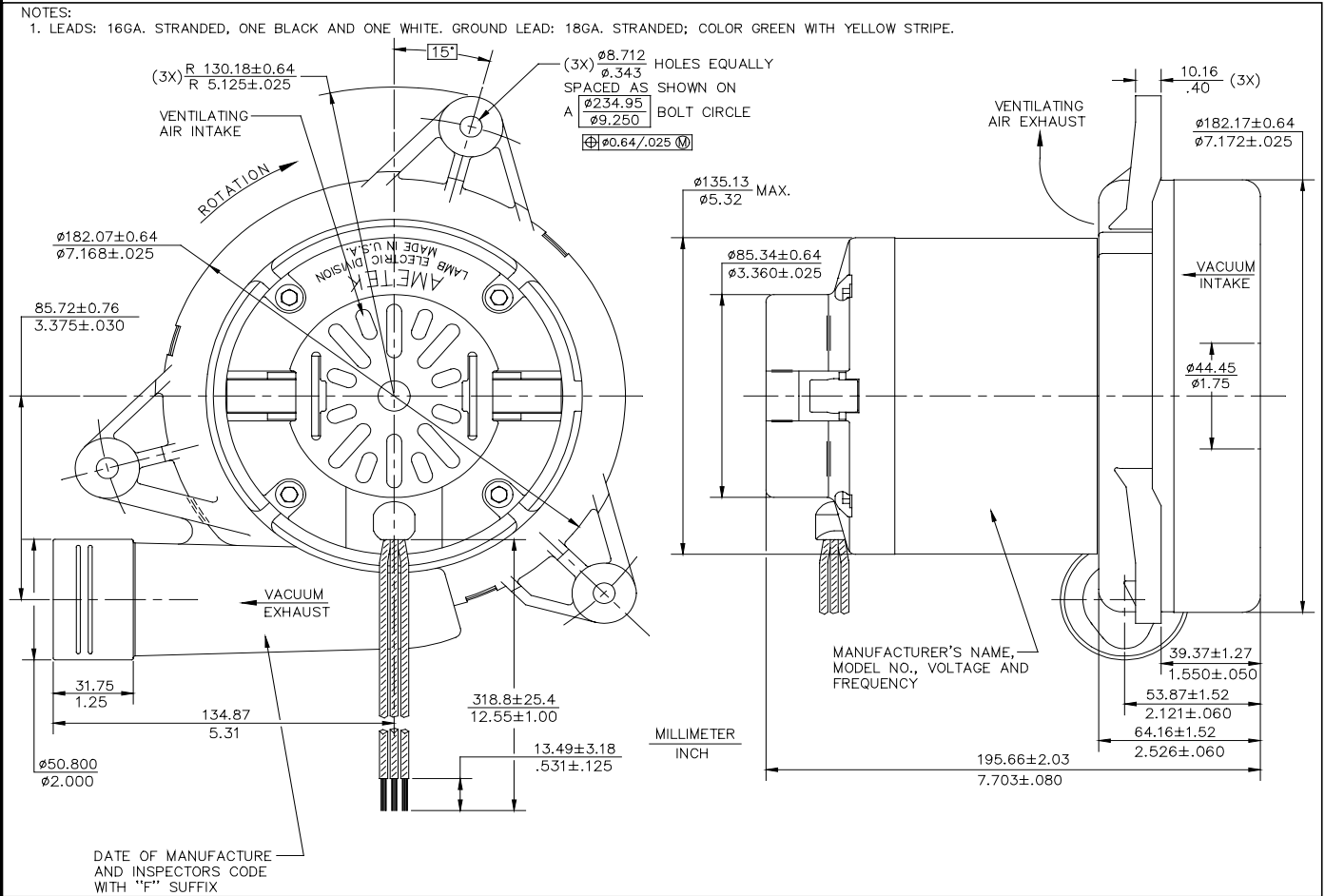
Orifice (mm)	Amps	Watts (In)	RPM	Vac (mm H ₂ O)	Flow (L/Sec)	Air Watts
48.0	13.3	1464	16466	136	49.6	66
40.0	13.3	1465	16418	261	47.4	121
30.0	13.3	1466	16450	653	42.4	270
23.0	12.9	1422	16713	1169	33.3	378
19.0	12.3	1365	17162	1525	25.9	386
16.0	11.7	1299	17726	1799	19.9	349
13.0	10.8	1212	18560	2083	14.2	287
10.0	9.9	1122	19500	2366	8.9	205
6.5	8.9	1013	20686	2654	4.1	107
0.0	8.1	928	21770	2987	0.0	0

Note: Metric performance data is calculated from the ASTM data above.

* Data represents performance of a typical motor sampled from a large production quantity. Individual motor data may vary to normal manufacturing variations.

Test Specs:	120 volts	Minimum Sealed Vacuum:	111.0"	ORIFICE:	7/8"	Minimum Vacuum:	44.0"	Maximum Watts:	1500
--------------------	-----------	-------------------------------	--------	-----------------	------	------------------------	-------	-----------------------	------

DIMENSIONS



IMPORTANT NOTE: Pictorial and dimensional data are subject to change without notice. Contact factory for current revision levels.

WARNING - When using AMETEK/Lamb Electric bypass motors in machines that come in contact with foam, liquid (including water) or other foreign substances, the machine must be designed and constructed to prevent those substances from reaching the fan system, motor housing and electrical components. Lamb vacuum motors other than hazardous duty models should not be applied in machines that come in contact with dry chemicals or other volatile materials. Failure to observe these precautions could cause flashing (depending on volatility) or electrical shock which could result in property damage and severe bodily injury, including death in extreme cases. All applications incorporating Lamb motors should be submitted to appropriate organizations or agencies for testing specifically related to the safety of your equipment.

AMETEK/Lamb Electric Division
 627 Lake Street
 Kent, Ohio 44240
 U.S.A.
 Tel: (330) 673-3451
 Fax: (330) 673-8994

Ametek GmbH
 P. O. Box 1251
 D-71667 Marbach
 Germany
 Phone: + 49-714-484-9512
 Fax: + 49-714-484-9513

AMETEK/Singapore Private Limited
 10 Ang Mo Kio Street 65
 # 05-12 Techpoint
 Singapore 2056
 Tel: + 65-484-2388
 Fax: + 65-481-6588