

LAMB ELECTRIC

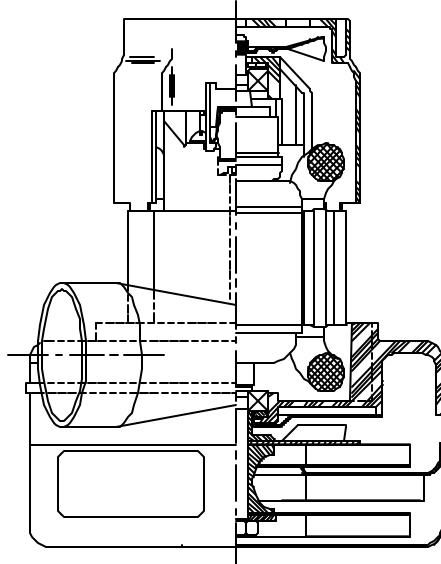
Model: 116077-13

DESCRIPTION

- Two stage
- 220 volts
- 5.7"/145 mm diameter
- Double ball bearings
- Peripheral bypass discharge
- Double insulation
- Thermoset fan bracket
- Thermoset commutator bracket

DESIGN APPLICATION

- Equipment operating in environments requiring separation of working air from motor ventilating air
- Designed to handle clean, dry, filtered air only



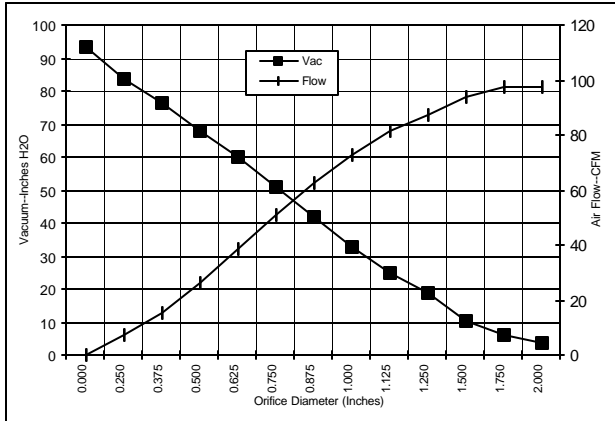
SPECIAL FEATURES

- Suitable for 220 volt operation, 50/60 Hz
- UL recognized, category PRGY2 (E47185)
- Epoxy painted fan case
- Skeleton-frame design
- Patented air seal bearing construction, U.S. Patent #4,088,424
- The Lamb Electric vacuum motor line offers a wide range of performance levels to meet design needs

TYPICAL MOTOR PERFORMANCE.*

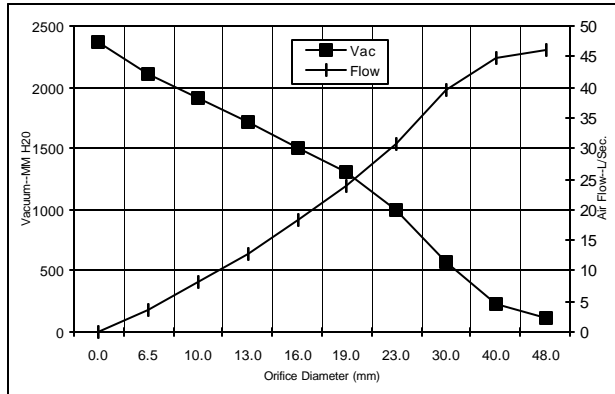
(At 220 volts, 60Hz, test data is corrected to standard conditions of 29.92 Hg, 68° F.)

ASTM DATA



Orifice (Inches)	Amps	Watts (In)	RPM	Vac (In.H ₂ O)	Flow (CFM)	Air Watts
2.000	5.5	1161	19359	3.5	97.3	40
1.750	5.6	1163	19383	6.0	97.7	69
1.500	5.6	1166	19390	10.5	93.7	116
1.250	5.6	1174	19358	18.9	87.4	194
1.125	5.6	1175	19366	25.0	81.2	239
1.000	5.6	1171	19402	32.5	72.8	278
0.875	5.5	1161	19507	41.6	62.9	308
0.750	5.3	1127	19825	51.0	51.0	305
0.625	5.1	1069	20440	59.8	38.2	268
0.500	4.7	995	21218	68.1	26.0	208
0.375	4.3	917	22129	76.5	15.6	140
0.250	3.9	850	22906	83.6	7.5	74
0.000	3.6	779	23590	93.5	0.0	0

METRIC DATA



Orifice (mm)	Amps	Watts (In)	RPM	Vac (mm H ₂ O)	Flow (L/Sec)	Air Watts
48.0	5.5	1162	19370	116	46.0	53
40.0	5.6	1165	19388	232	44.8	102
30.0	5.6	1175	19362	565	39.6	219
23.0	5.5	1164	19481	999	30.9	301
19.0	5.3	1126	19837	1300	24.0	304
16.0	5.1	1071	20415	1510	18.3	269
13.0	4.7	1002	21140	1709	12.8	214
10.0	4.3	929	21992	1911	8.1	150
6.5	3.9	853	22867	2114	3.7	77
0.0	3.6	779	23590	2375	0.0	0

Note: Metric performance data is calculated from the ASTM data above.

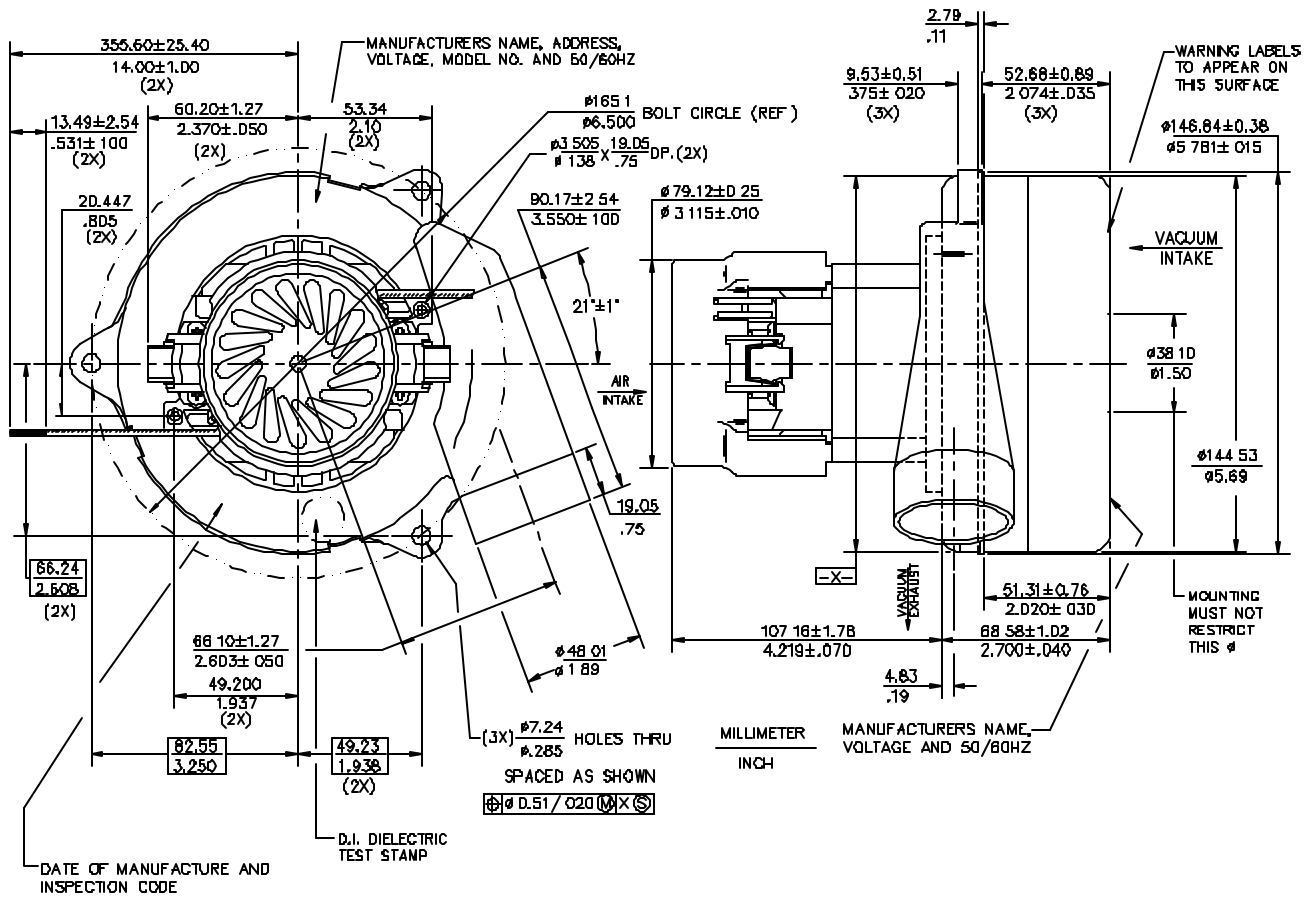
* Data represents performance of a typical motor sampled from a large production quantity. Individual motor data may vary due to normal manufacturing variat

Test Specs:	220 volts	Minimum Sealed Vacuum:	90.0"	ORIFICE:	13 mm	Minimum Vacuum:	64.0"	Maximum Watts:	1100
-------------	-----------	------------------------	-------	----------	-------	-----------------	-------	----------------	------

DIMENSIONS

NOTES:

1. LEADS: 18GA STRANDED, LEADS CAN BE ANY COLOR EXCEPT GREEN OR GREEN WITH YELLOW STRIPE.



IMPORTANT NOTE: Pictorial and dimensional data are subject to change without notice. Contact factory for current revision levels.

WARNING - When using AMETEK Lamb Electric bypass motors in machines that come in contact with foam, liquid (including water), or other foreign substances, the machine must be designed and constructed to prevent those substances from reaching the fan system, motor housing, and electrical components. Lamb Electric vacuum motors other than hazardous duty models should not be applied in machines that come in contact with dry chemicals or other volatile materials. Failure to observe these precautions could cause flashing (depending on volatility) or electrical shock which could result in property damage and severe bodily injury, including death in extreme cases. All applications incorporating Lamb Electric motors should be submitted to appropriate organizations or agencies for testing specifically related to the safety of your equipment.

AMETEK/Lamb Electric Division
 627 Lake Street
 Kent, Ohio 44240
 U.S.A.
 Tel: (330) 673-3451
 Fax: (330) 673-8994

Ametek GmbH
 Weillindorfer Str. 47
 D-70825 Korntal-Munchingen
 Germany
 Phone: + 49-711-838-7876
 Fax: + 49-711-838-7862

AMETEK/Singapore Private Limited
 10 Ang Mo Kio Street 65
 # 05-12 Techpoint
 Singapore 2056
 Tel: + 65-484-2388
 Fax: + 65-481-6588