



AMETEK
LAMB ELECTRIC

Product Bulletin

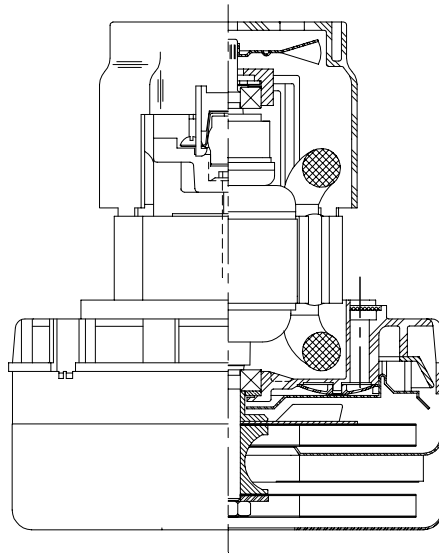
Model: 116049-13

DESCRIPTION

- Two stage
- 120 volts
- 5.7"/145 mm diameter
- Double ball bearings
- Two speed
- ACUSTEK® low-noise peripheral bypass discharge
- Thermostet fan end bracket
- Aluminum commutator bracket

DESIGN APPLICATION

- Equipment operating in environments requiring separation of working air from motor ventilating air
- Designed to handle clean, dry, filtered air only

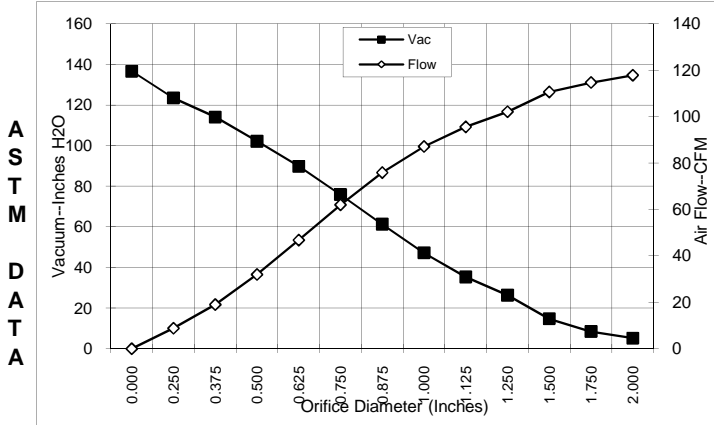


SPECIAL FEATURES

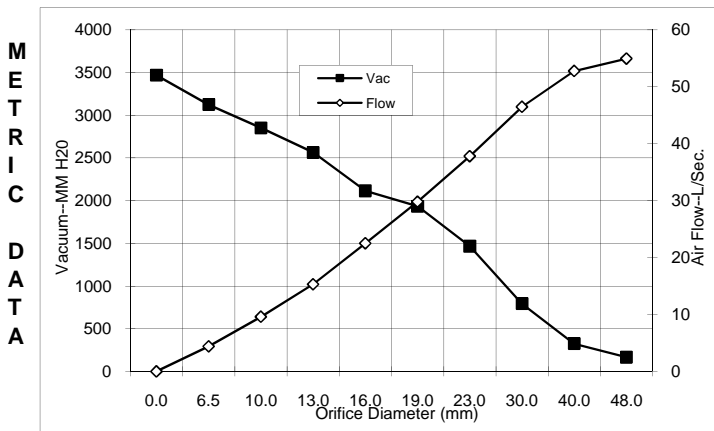
- Suitable for 120 volt AC operation, 50/60 Hz
- UL recognized, category PRGY2 (E471885)
- CSA certified, class 1611 01 (LR31393)
- Provision for grounding
- Skeleton-frame design
- ACUSTEK® low-noise design, U.S. Patent #1,417,2000
- The Lamb Electric vacuum motor line offers a wide range of performance levels to meet design needs
- Patented air seal bearing (U.S. Patent #4,088,424)
- Epoxy painted fan case

TYPICAL MOTOR PERFORMANCE.*

(At 120 volts, 60Hz, test data is corrected to standard conditions of 29.92 Hg, 68° F.)



Orifice (Inches)	Amps	Watts (In)	RPM	Vac (In.H2O)	Flow (CFM)	Air Watts
2.000	15.3	1775	23620	5.1	117.8	71
1.750	15.2	1773	23587	8.4	114.7	113
1.500	15.3	1774	23660	14.7	110.6	191
1.250	15.2	1768	23713	26.3	102.1	316
1.125	15.1	1754	23757	35.3	95.5	397
1.000	14.9	1733	23933	47.2	87.1	483
0.875	14.6	1697	24177	61.3	75.9	547
0.750	14.0	1634	24680	75.8	62.0	553
0.625	13.2	1545	25520	89.8	46.8	494
0.500	12.2	1429	26503	102.2	31.9	384
0.375	11.0	1298	27860	114.1	19.0	255
0.250	10.0	1181	29137	123.5	8.8	128
0.000	9.2	1090	30340	136.6	0.0	0



Orifice (mm)	Amps	Watts (In)	RPM	Vac (mm H2O)	Flow (L/Sec)	Air Watts
48.0	15.2	1774	23605	167	54.9	90
40.0	15.2	1774	23638	325	52.8	168
30.0	15.1	1760	23737	794	46.5	360
23.0	14.6	1706	24116	1467	37.8	515
19.0	14.0	1632	24697	1933	29.8	528
16.0	13.2	1548	25486	2115	22.5	470
13.0	12.3	1440	26405	2563	15.3	395
10.0	11.2	1318	27656	2852	9.6	274
6.5	10.0	1187	29073	3124	4.4	134
0.0	9.2	1090	30340	3469	0.0	0

Note: Metric performance data is calculated from the ASTM data above.

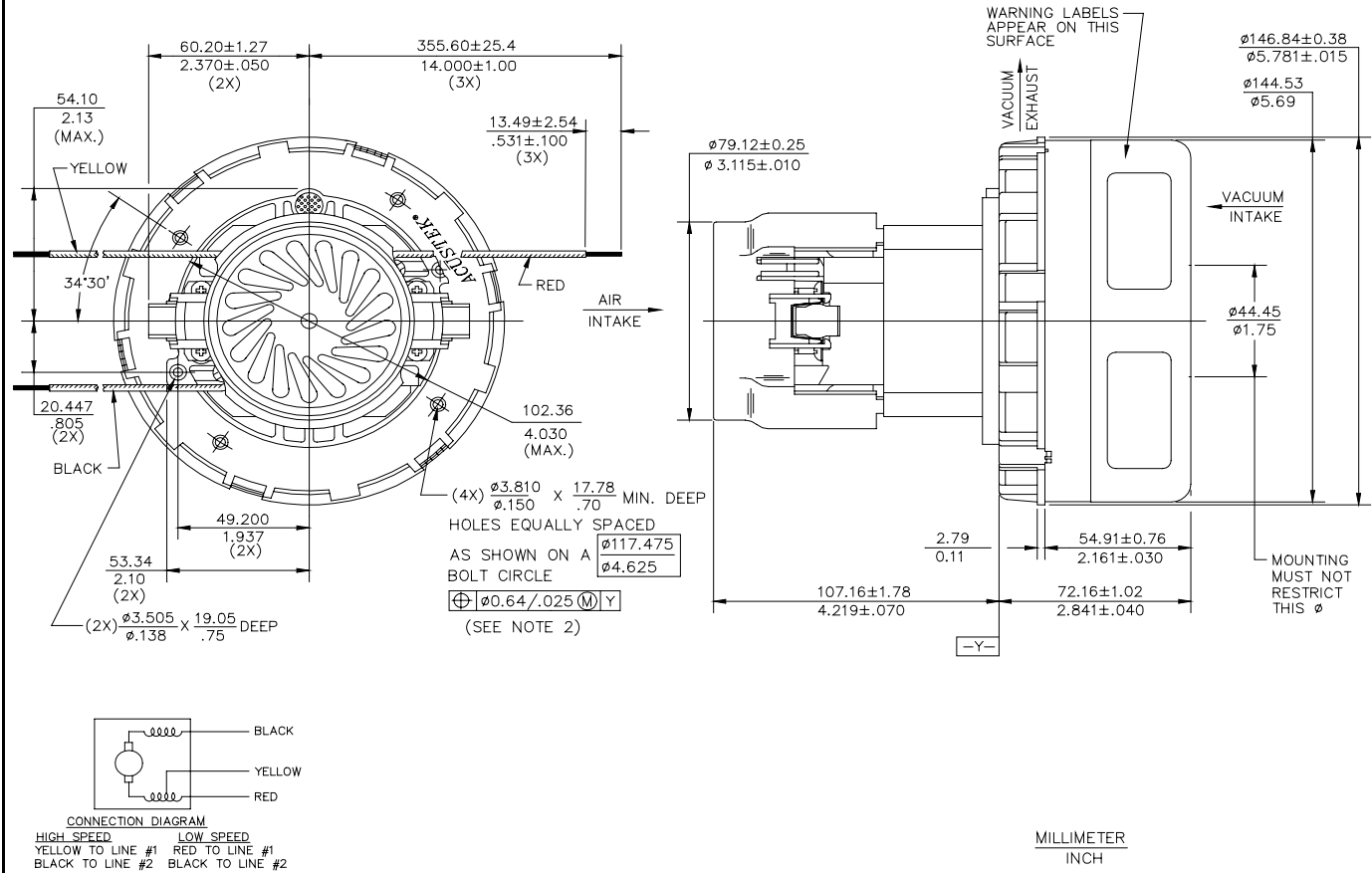
* Data represents performance of a typical motor sampled from a large production quantity. Individual motor data may vary to normal manufacturing variations.

Test Specs:	120 volt	Minimum Sealed Vacuum: 76	TBA	ORIFICE: 7/8"	Minimum Vacuum:	TBA	Maximum Watts:	TBA
--------------------	----------	----------------------------------	-----	----------------------	------------------------	-----	-----------------------	-----

DIMENSIONS

NOTES:

1. LEADS: 18GA STRANDED.
2. RECOMMENDED SCREW SIZE 10-16 TYPE BT OR 25 THREAD CUTTING SCREW. MAXIMUM PENETRATION 17.40/.685.
3. MOTOR IDENTIFICATION: MANUFACTURER'S NAME, MODEL NUMBER, VOLTAGE, FREQUENCY, INSPECTOR'S CODE, DATE OF MANUFACTURE, AGENCY RECOGNITION CODE, PLANT LOCATION CODE, MADE IN USA, AND DIELECTRIC TEST STAMP.



IMPORTANT NOTE: Pictorial and dimensional data are subject to change without notice. Contact factory for current revision levels.

WARNING - When using AMETEK/Lamb Electric bypass motors in machines that come in contact with foam, liquid (including water) of other foreign substances, the machine must be designed and constructed to prevent those substances from reaching the fan system, motor housing and electrical components. Lamb vacuum motors other than hazardous duty models should not be applied in machines that come in contact with dry chemicals or other volatile materials. Failure to observe these precautions could cause flashing (depending on volatility) or electrical shock which could result in property damage and severe bodily injury, including death in extreme cases. All applications incorporating Lamb motors should be submitted to appropriate organizations or agencies for testing specifically related to the safety of your equipment.

AMETEK/Lamb Electric Division
 627 Lake Street
 Kent, Ohio 44240
 U.S.A.
 Tel: (330) 673-3451 Fax: (330) 673-8994
 www.lambelectric.com