



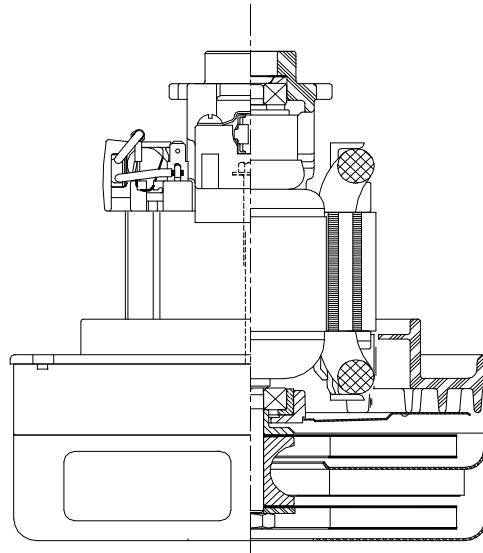
**SPECIAL FEATURES**

- Suitable for 240volt AC operation, 50/60 Hz
- UL recognized, category PRGY2 (E47185)
- Provision for grounding
- Skeleton frame design

**The Lamb vacuum motor line offers a wide range of performance levels to meet design needs**

**DESCRIPTION**

- Two stage
- 240 volts
- 5.7" (145mm) mm diameter
- Double ball bearings
- Single speed
- Thru-flow discharge
- Thermoset fan end bracket
- Thermoset commutator bracket

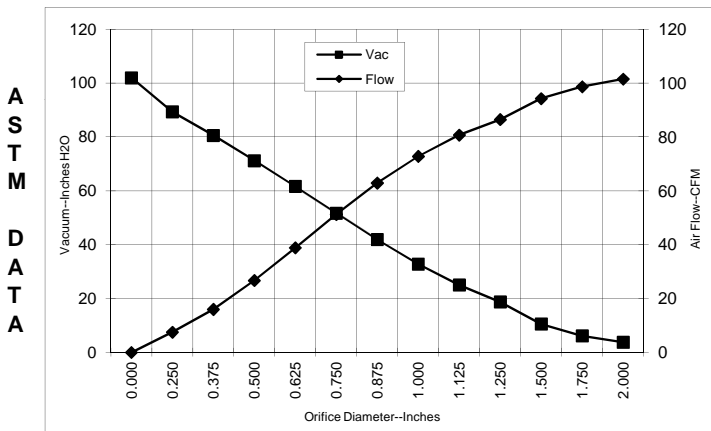


**DESIGN APPLICATION**

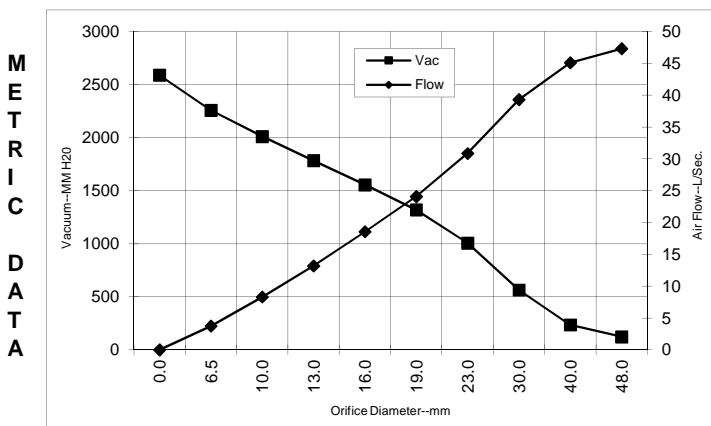
- Equipment operating in environments requiring separation of working air from motor ventilating air.
- Designed to handle clean, dry, filtered air only.

**TYPICAL MOTOR PERFORMANCE.\***

(At 240 volts, 60Hz, test data is corrected to standard conditions of 29.92 Hg, 68° F.)



Orifice (Inches)	Amps	Watts (In)	RPM	Vac (In.H2O)	Flow (CFM)	Air Watts
2.000	4.0	919	19527	3.8	101.5	45
1.750	4.0	917	19613	6.2	98.7	72
1.500	4.1	925	19323	10.6	94.3	117
1.250	4.1	925	19380	18.7	86.5	191
1.125	4.1	926	19380	25.0	80.7	238
1.000	4.1	926	19433	32.8	72.8	224
0.875	4.0	915	19577	41.9	62.9	310
0.750	3.9	889	19753	51.7	51.3	312
0.625	3.7	843	20393	61.7	38.8	282
0.500	3.4	780	21243	71.2	26.7	224
0.375	3.1	715	22387	80.6	16.0	152
0.250	2.9	660	23393	89.3	7.5	79
0.000	2.7	618	24430	102.0	0.0	0



Orifice (mm)	Amps	Watts (In)	RPM	Vac (mm H2O)	Flow (L/Sec)	Air Watts
48.0	4.0	918	19565	122	47.3	57
40.0	4.0	923	19410	235	45.1	104
30.0	4.1	926	19380	564	39.3	217
23.0	4.0	918	19541	1007	30.9	289
19.0	3.9	888	19766	1319	24.1	311
16.0	3.7	845	20368	1556	18.6	283
13.0	3.4	786	21158	1784	13.2	230
10.0	3.1	725	22215	2011	8.3	162
6.5	2.9	663	23343	2258	3.7	83
0.0	2.7	618	24430	2590	0.0	0

Note: Metric performance data is calculated from the ASTM data above.

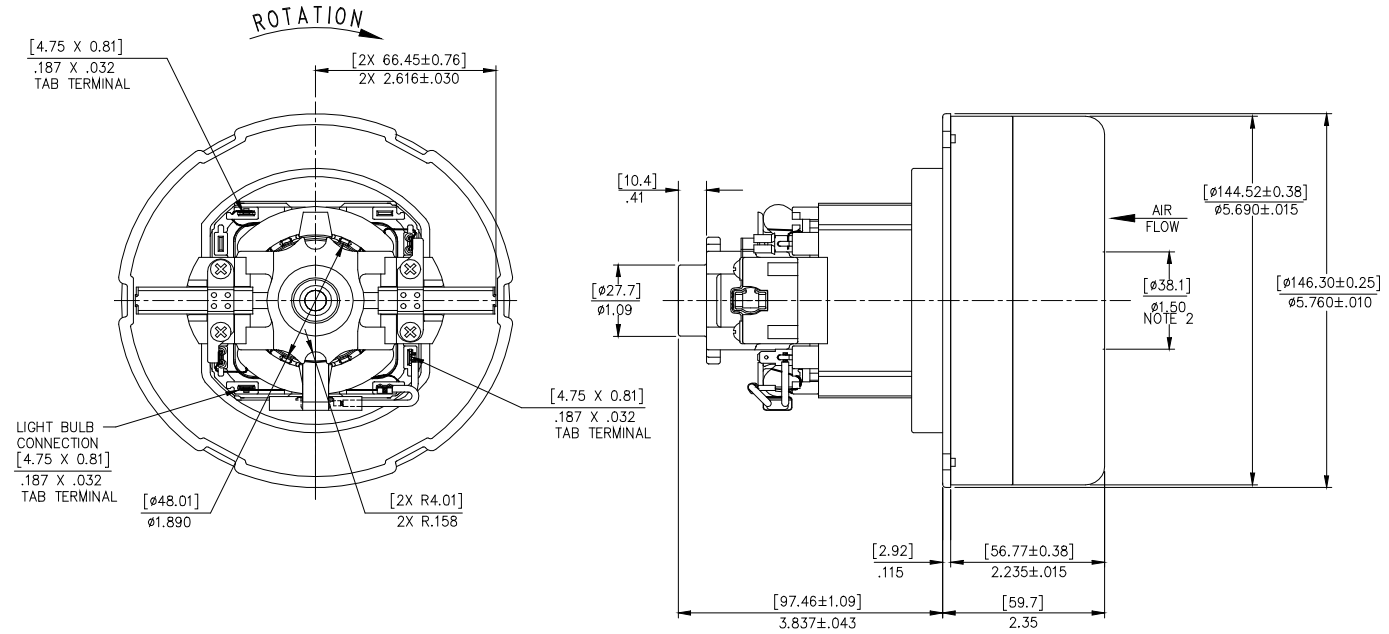
\* Data represents performance of a typical motor sampled from a large production quantity. Individual motor data may vary due to normal manufacturing variations.

Test Specs:	240 volt	Minimum Sealed Vacuum:	90"	ORIFICE: 7/8"	Minimum Vacuum:	36"	Maximum Watts:	980
-------------	----------	------------------------	-----	---------------	-----------------	-----	----------------	-----

**DIMENSIONS**

**NOTES:**

1. MOTOR IDENTIFICATION: MANUFACTURER'S NAME, MODEL NUMBER, VOLTAGE, FREQUENCY, INSPECTORS CODE, DATE OF MANUFACTURE, AGENCY RECOGNITION CODE, PLANT LOCATION CODE AND MADE IN USA.
2. MOUNTING MUST NOT RESTRICT THIS DIAMETER.
3. APPROVED BEARING SOURCE NMB.



**IMPORTANT NOTE:** Pictorial and dimensional data are subject to change without notice. Contact factory for current revision levels.

**WARNING** - When using AMETEK Lamb Electric bypass motors in machines that come in contact with foam, liquid (including water), or other foreign substances, the machine must be designed and constructed to prevent those substances from reaching the fan system, motor housing, and electrical components. Lamb Electric vacuum motors other than hazardous duty models should not be applied in machines that come in contact with dry chemicals or other volatile materials. Failure to observe these precautions could cause flashing (depending on volatility) or electrical shock which could result in property damage and severe bodily injury, including death in extreme cases. All applications incorporating Lamb Electric motors should be submitted to appropriate organizations or agencies for testing specifically related to the safety of your equipment.

**AMETEK/Floorcare & Specialty Motors**  
[www.ametekfsm.com](http://www.ametekfsm.com)