



AMETEK
LAMB ELECTRIC

Product Bulletin

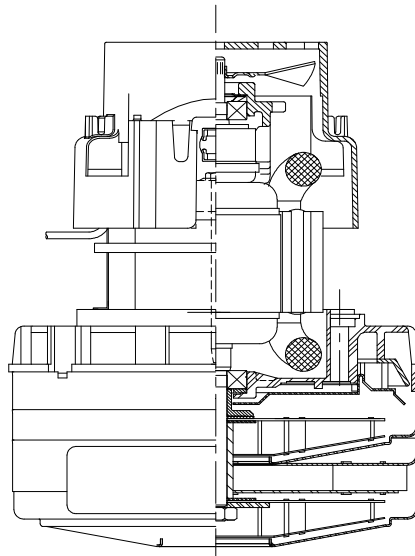
Model: 122567-00

DESCRIPTION

- 2 Stage Fan System
- 120 volts
- 5.7"/ 145 mm diameter
- Dual ball bearings
- Single speed
- Acustek bypass discharge
- Thermoset fan end bracket
- Thermoset commutator bracket

DESIGN APPLICATION

- Equipment operating in environments requiring separation of working air from motor ventilating air
- Designed to handle clean, dry, filtered air only



SPECIAL FEATURES

- Suitable for 120 volt AC operation, 50/60 Hz
- UL recognized, category PRGY2 (E47185)
- Provision for grounding
- Skeleton frame design
- Tapered fan system
- The Lamb vacuum motor line offers a wide range of performance levels to meet design needs

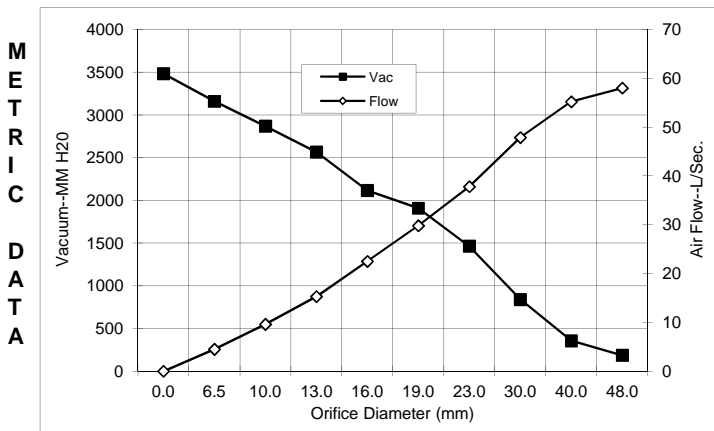


TYPICAL MOTOR PERFORMANCE.*

(At 120 volts, 60Hz, test data is corrected to standard conditions of 29.92 Hg, 68° F.)



c (Inches)	Amps	Watts (In)	RPM	Vac (In.H ₂ O)	Flow (CFM)	Air Watts
2.000	16.6	1868	23711	5.7	123.8	82
1.750	16.6	1866	23699	9.5	121.7	135
1.500	16.6	1872	23669	16.0	114.9	216
1.250	16.6	1863	23660	28.0	105.5	347
1.125	16.5	1855	23754	37.2	98.1	428
1.000	16.2	1828	23914	48.2	88.0	497
0.875	15.9	1789	24191	60.8	75.7	540
0.750	15.3	1725	24646	74.9	61.5	540
0.625	14.4	1631	25380	89.1	46.4	485
0.500	13.2	1503	26445	102.3	31.7	381
0.375	11.8	1347	27925	114.8	18.9	254
0.250	10.6	1224	29413	124.9	9.0	132
0.000	9.7	1120	30700	137.1	0.0	0



Orifice (mm)	Amps	Watts (In)	RPM	Vac (mm H ₂ O)	Flow (L/Sec)	Air Watts
48.0	16.6	1867	23706	187	58.0	106
40.0	16.6	1870	23678	357	55.2	192
30.0	16.5	1858	23712	840	47.9	392
23.0	16.0	1798	24122	1464	37.8	515
19.0	15.3	1723	24660	1909	29.8	528
16.0	14.4	1635	25350	2115	22.5	470
13.0	13.3	1516	26339	2564	15.3	391
10.0	12.0	1370	27703	2868	9.6	273
6.5	10.7	1230	29339	3159	4.5	138
0.0	9.7	1120	30700	3483	0.0	0

Note: Metric performance data is calculated from the ASTM data above.

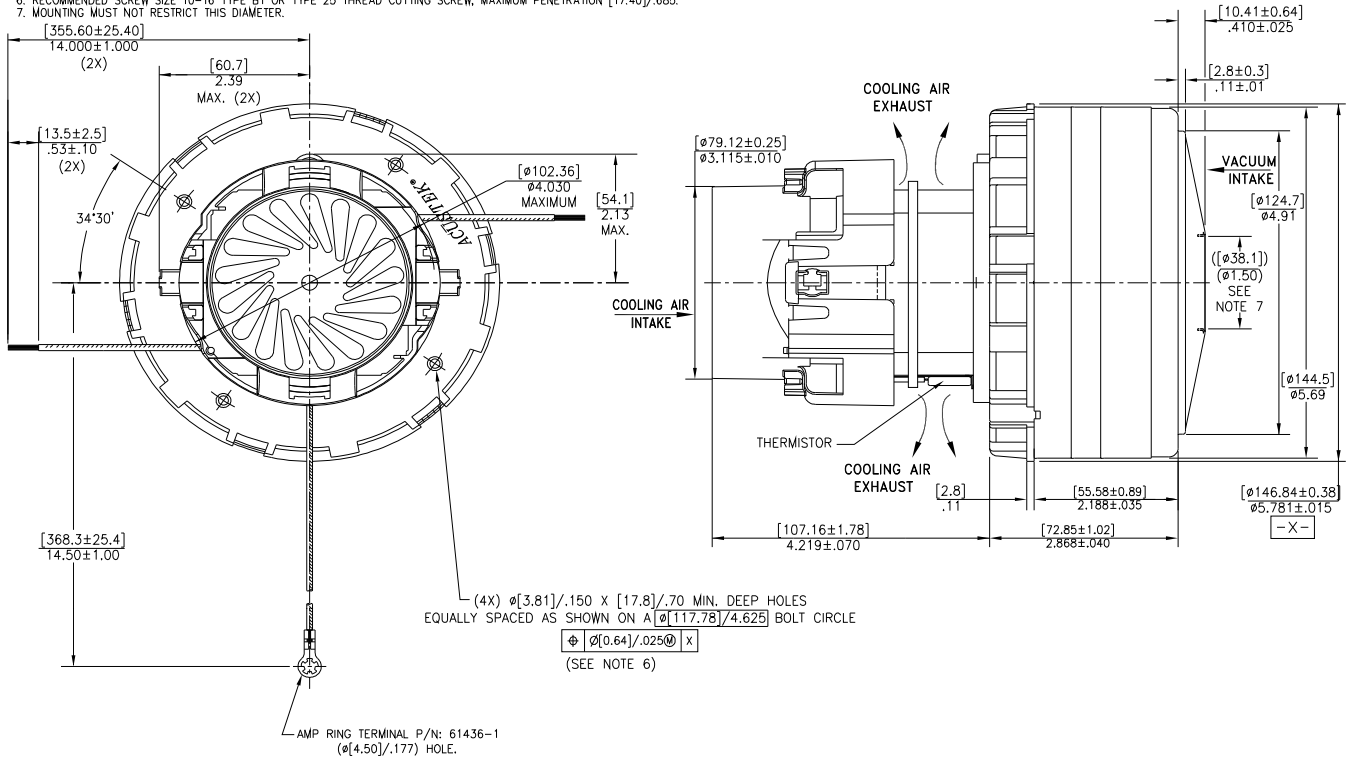
* Data represents performance of a typical motor sampled from a large production quantity. Individual motor data may vary to normal manufacturing variations.

Test Specs: 120 volt	Minimum Sealed Vacuum: 124"	ORIFICE: 7/8"	Minimum Vacuum: 57"	Maximum Watts: 1920
-----------------------------	------------------------------------	----------------------	----------------------------	----------------------------

DIMENSIONS

NOTES:

1. POWER LEADS: 18GA STRANDED. LEADS CAN BE ANY COLOR EXCEPT GREEN OR GREEN WITH YELLOW STRIPE. GROUND LEAD: 18GA STRANDED, GREEN OR GREEN WITH YELLOW STRIPE.
2. MOTOR IDENTIFICATION: MANUFACTURER'S NAME, MODEL NUMBER, VOLTAGE, FREQUENCY, INSPECTORS CODE WITH "FF" SUFFIX, DATE OF MANUFACTURE, AGENCY RECOGNITION CODE, PLANT LOCATION CODE, PATENT INFORMATION "ONE OR MORE OF THE FOLLOWING PATENTS APPLY TO THIS MOTOR: 5482378; 5736805; 4669952; 4684835; 6561772". AND COUNTRY OF ORIGIN.
3. ALLOW [0.0016 SQ M]/2.5 SQ IN. MIN. FOR COOLING AIR INTAKE.
4. COOLING AIR INTAKE MUST BE SEPARATED FROM COOLING AIR EXHAUST.
5. VACUUM EXHAUST MUST BE SEPARATED FROM COOLING EXHAUST.
6. RECOMMENDED SCREW SIZE 10-16 TYPE BT OR TYPE 25 THREAD CUTTING SCREW, MAXIMUM PENETRATION [17.40]/.685.
7. MOUNTING MUST NOT RESTRICT THIS DIAMETER.



IMPORTANT NOTE: Pictorial and dimensional data are subject to change without notice. Contact factory for current revision levels.

WARNING - When using AMETEK/Lamb Electric bypass motors in machines that come in contact with foam, liquid (including water) or other foreign substances, the machine must be designed and constructed to prevent those substances from reaching the fan system, motor housing and electrical components. Lamb vacuum motors other than hazardous duty models should not be applied in machines that come in contact with dry chemicals or other volatile materials. Failure to observe these precautions could cause flashing (depending on volatility) or electrical shock which could result in property damage and severe bodily injury, including death in extreme cases. All applications incorporating Lamb motors should be submitted to appropriate organizations or agencies for testing specifically related to the safety of your equipment.

AMETEK/Floorcare & Specialty Motors
www.ametekfsm.com