



Floorcare & Specialty Motors

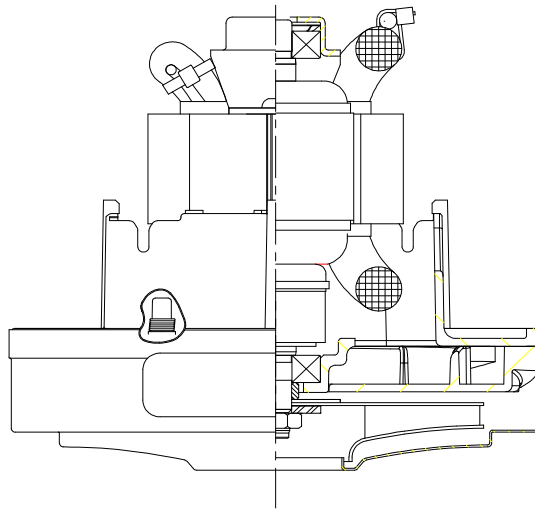
Model: 122546-00

DESCRIPTION

- One stage
- 240 volts
- 5.1"/130 mm diameter
- Double ball bearings
- Single speed
- Thru-flow discharge

DESIGN APPLICATION

- Equipment operating in environments not requiring separation of working air from motor ventilating air
- Designed to handle clean, dry, filtered air only



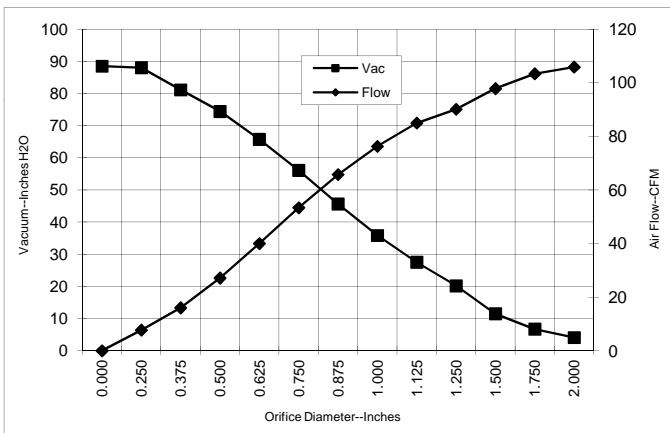
SPECIAL FEATURES

- Suitable for 240 volt AC operation, 60 Hz
- UL recognized, category PRGY2 (E47185)
- CSA certified, class 1611 01 (LR31393)
- Provision for grounding
- Tapered fan system
- High airflow fan system
- The Lamb Electric vacuum motor line offers a wide range of performance levels to meet design needs

TYPICAL MOTOR PERFORMANCE.*

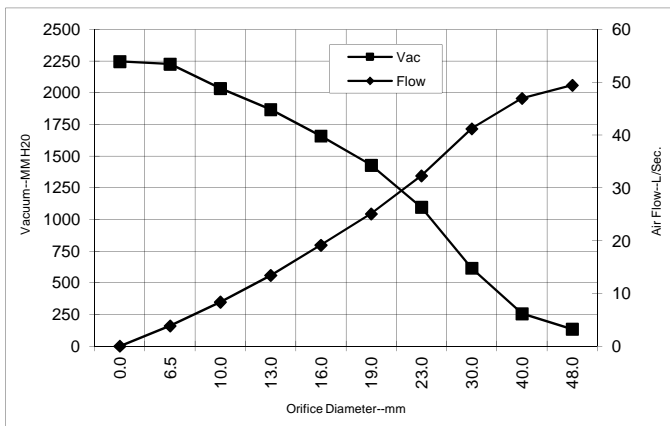
(At 120 volts, 60Hz, test data is corrected to standard conditions of 29.92 Hg, 68° F.)

ASTM DATA



Orifice (Inches)	Amps	Watts (In)	RPM	Vac (In.H2O)	Flow (CFM)	Air Watts
2.000	3.9	903	28737	4.1	105.9	51
1.750	4.0	932	28580	6.7	103.4	82
1.500	3.9	910	28692	11.5	97.8	132
1.250	3.9	903	28713	20.2	90.1	214
1.125	4.0	928	28810	27.5	85.0	275
1.000	4.0	919	28954	35.9	76.3	321
0.875	3.8	873	29495	45.6	65.8	352
0.750	3.6	848	30237	56.1	53.4	351
0.625	3.3	780	31302	65.7	40.0	309
0.500	3.1	717	32805	74.4	27.1	237
0.375	2.8	653	34480	81.2	16.0	153
0.250	2.5	602	35893	88.1	7.7	80
0.000	2.4	558	37771	88.5	0.0	0

METRIC DATA



Orifice (mm)	Amps	Watts (In)	RPM	Vac (mm H2O)	Flow (L/Sec)	Air Watts
48.0	3.9	916	28668	134	49.5	65
40.0	4.0	917	28659	256	47.0	117
30.0	3.9	917	28767	616	41.2	247
23.0	3.8	884	29360	1097	32.3	344
19.0	3.6	847	30258	1429	25.1	350
16.0	3.3	782	31259	1660	19.1	310
13.0	3.1	723	32655	1869	13.4	244
10.0	2.8	663	34228	2036	8.4	165
6.5	2.6	605	35822	2228	3.8	83
0.0	2.4	558	37771	2248	0.0	0

Note: Metric performance data is calculated from the ASTM data above.

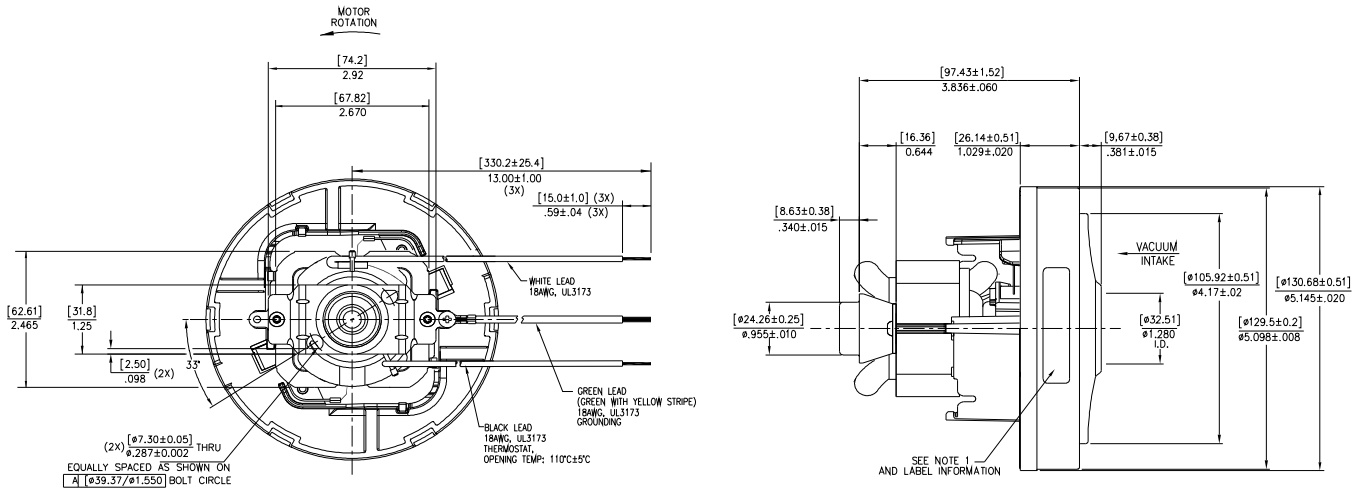
* Data represents performance of a typical motor sampled from a large production quantity. Individual motor data may vary due to normal manufacturing variations.

Test Specs:	120 volts	Minimum Sealed Vacuum: 82"	ORIFICE:	7/8"	Minimum Vacuum: 41"	Maximum Watts:	930
-------------	-----------	----------------------------	----------	------	---------------------	----------------	-----

DIMENSIONS

NOTES:

1. MODEL NUMBER, DATE OF MANUFACTURE, PLANT LOCATION CODE, AGENCY RECOGNITION CODE, INSPECTOR'S CODE, MANUFACTURER'S NAME, "US PATENT: US 6,703,754 B1", VOLTAGE AND FREQUENCY TO APPEAR ON MOTOR.



IMPORTANT NOTE: Pictorial and dimensional data are subject to change without notice. Contact factory for current revision levels.

WARNING - When using AMETEK Floorcare & Specialty Motors (F&SM) bypass motors in machines that come in contact with foam, liquid (including water), or other foreign substances, the machine must be designed and constructed to prevent those substances from reaching the fan system, motor housing, and electrical components. F&SM vacuum motors other than hazardous duty models should not be applied in machines that come in contact with dry chemicals or other volatile materials. Failure to observe these precautions could cause flashing (depending on volatility) or electrical shock which could result in property damage and severe bodily injury, including death in extreme cases. All applications incorporating F&SM motors should be submitted to appropriate organizations or agencies for testing specifically related to the safety of your equipment.

AMETEK/Floorcare & Specialty Motors
www.ametekfsm.com