



**Floorcare & Specialty Motors**

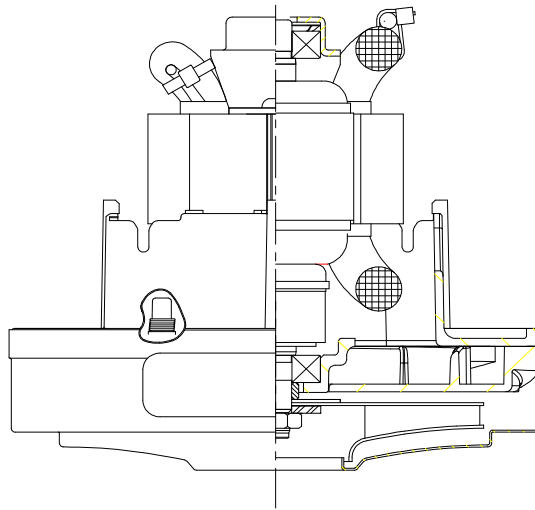
**Model: 122544-00**

**DESCRIPTION**

- One stage
- 120 volts
- 5.1"/130 mm diameter
- Double ball bearings
- Single speed
- Thru-flow discharge

**DESIGN APPLICATION**

- Equipment operating in environments not requiring separation of working air from motor ventilating air
- Designed to handle clean, dry, filtered air only



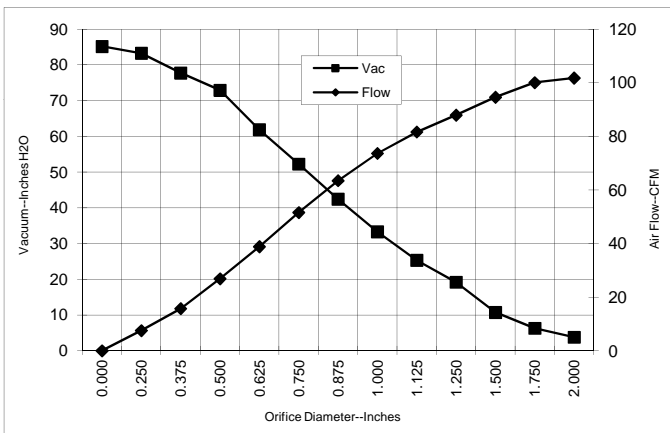
**SPECIAL FEATURES**

- Suitable for 120 volt AC operation, 50/ 60 Hz
- UL recognized, category PRGY2 (E47185)
- CSA certified, class 1611 01 (LR31393)
- Provision for grounding
- Tapered fan system
- High airflow fan system
- The Lamb Electric vacuum motor line offers a wide range of performance levels to meet design needs

**TYPICAL MOTOR PERFORMANCE.\***

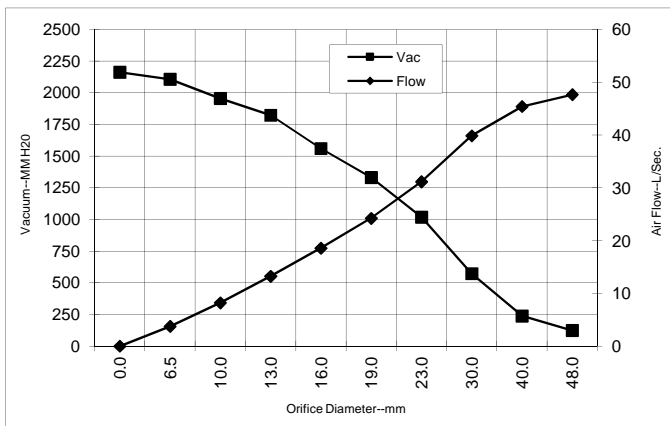
(At 120 volts, 60Hz, test data is corrected to standard conditions of 29.92 Hg, 68° F.)

**ASTM DATA**



Orifice (Inches)	Amps	Watts (In)	RPM	Vac (In.H2O)	Flow (CFM)	Air Watts
2.000	7.1	827	28047	3.8	101.8	45
1.750	7.1	826	28010	6.3	100.1	74
1.500	7.1	824	28013	10.7	94.6	119
1.250	7.1	823	28061	19.2	87.9	198
1.125	7.0	816	28080	25.3	81.7	243
1.000	6.9	811	28274	33.3	73.6	288
0.875	6.8	794	28647	42.4	63.5	316
0.750	6.5	762	29305	52.3	51.6	316
0.625	6.1	715	30367	61.9	38.9	282
0.500	5.5	654	31926	72.9	26.9	230
0.375	5.1	604	33546	77.8	15.7	144
0.250	4.7	557	35091	83.3	7.5	74
0.000	4.4	521	36914	85.2	0.0	0

**METRIC DATA**



Orifice (mm)	Amps	Watts (In)	RPM	Vac (mm H2O)	Flow (L/Sec)	Air Watts
48.0	7.1	827	28031	124	47.7	58
40.0	7.1	825	28012	239	45.4	106
30.0	7.0	819	28071	573	39.9	223
23.0	6.8	798	28554	1020	31.2	309
19.0	6.5	761	29326	1332	24.2	316
16.0	6.1	717	30324	1562	18.6	283
13.0	5.6	660	31770	1824	13.3	235
10.0	5.2	612	33303	1957	8.2	157
6.5	4.7	559	35013	2108	3.8	77
0.0	4.4	521	36914	2163	0.0	0

Note: Metric performance data is calculated from the ASTM data above.

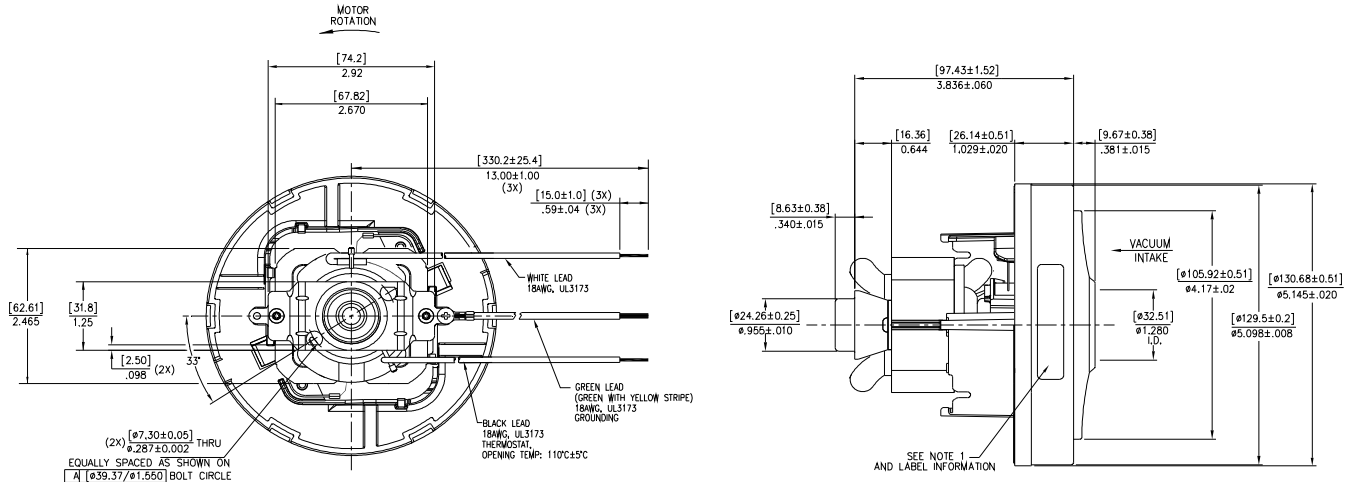
\* Data represents performance of a typical motor sampled from a large production quantity. Individual motor data may vary due to normal manufacturing variations.

Test Specs:	120 volts	Minimum Sealed Vacuum: 76"	ORIFICE:	7/8"	Minimum Vacuum: 37.5	Maximum Watts:	870
-------------	-----------	----------------------------	----------	------	----------------------	----------------	-----

**DIMENSIONS**

**NOTES:**

1. MODEL NUMBER, DATE OF MANUFACTURE, PLANT LOCATION CODE, AGENCY RECOGNITION CODE, INSPECTOR'S CODE, MANUFACTURER'S NAME, "US PATENT: US 6,703,754 B1", VOLTAGE AND FREQUENCY TO APPEAR ON MOTOR.



**IMPORTANT NOTE:** Pictorial and dimensional data are subject to change without notice. Contact factory for current revision levels.

**WARNING** - When using AMETEK Floorcare & Specialty Motors (F&SM) bypass motors in machines that come in contact with foam, liquid (including water), or other foreign substances, the machine must be designed and constructed to prevent those substances from reaching the fan system, motor housing, and electrical components. F&SM vacuum motors other than hazardous duty models should not be applied in machines that come in contact with dry chemicals or other volatile materials. Failure to observe these precautions could cause flashing (depending on volatility) or electrical shock which could result in property damage and severe bodily injury, including death in extreme cases. All applications incorporating F&SM motors should be submitted to appropriate organizations or agencies for testing specifically related to the safety of your equipment.

**AMETEK/Floorcare & Specialty Motors**  
[www.ametekfsm.com](http://www.ametekfsm.com)