



LAMB ELECTRIC



Model: 119905-00

SPECIAL FEATURES

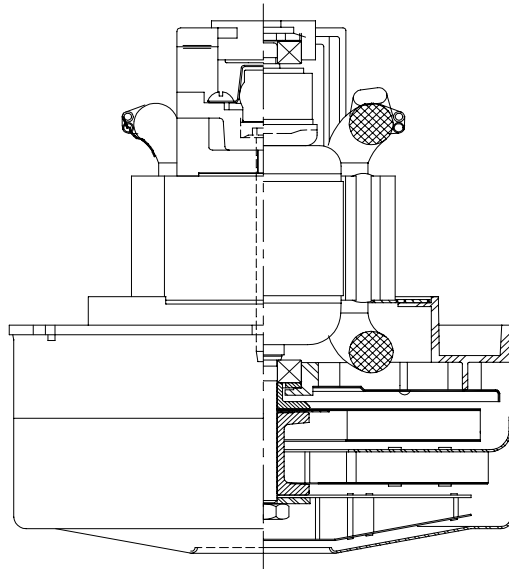
- Suitable for 120 volt AC operation, 50 or 60 Hz
 - UL recognized, category PRGY2 (E47185)
 - Provision for grounding
 - Skeleton frame design
 - Tapered fan system
 - High air flow fan system
 - Thermal Device
- The Lamb vacuum motor line offers a wide range of performance levels to meet design needs

DESCRIPTION

- Two stage
- 120 volts
- 5.7" / 145 mm diameter
- Double Ball bearings
- Single speed
- Thru-Flow discharge
- Aluminum fan end bracket
- Aluminum commutator bracket

DESIGN APPLICATION

- Equipment operating in environments requiring separation of working air from motor ventilating air
- Designed to handle clean, dry, filtered air only

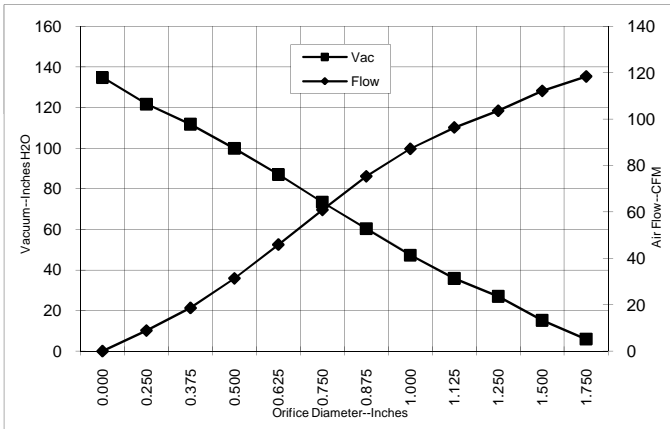


PEAK AIRWATTS
540
Calculated in accordance with ASTM F2105

TYPICAL MOTOR PERFORMANCE.*

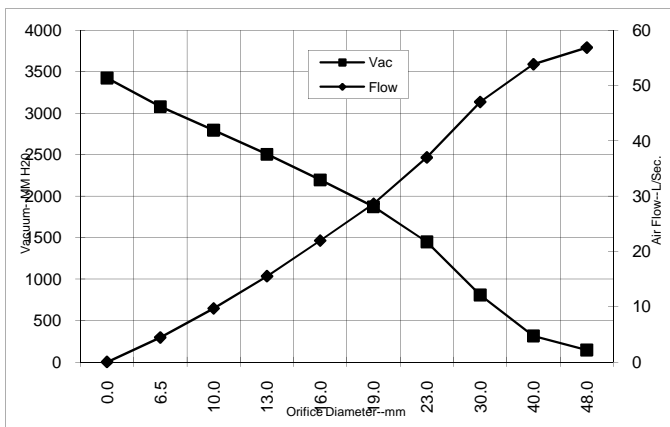
(At 120 volts AC, test data is corrected to standard conditions of 29.92 Hg, 68° F.)

ASTM DATA



| Orifice (Inches) | Amps | Watts (In) | RPM | Vac (In.H ₂ O) | Flow (CFM) | Air Watts |
|------------------|------|------------|-------|---------------------------|------------|-----------|
| 2.000 | 14.6 | 1654 | 22823 | 5.5 | 122.1 | 79 |
| 1.750 | 14.7 | 1655 | 22823 | 5.9 | 118.4 | 124 |
| 1.500 | 14.7 | 1659 | 22756 | 15.2 | 112.2 | 201 |
| 1.250 | 14.8 | 1665 | 22756 | 27.0 | 103.6 | 329 |
| 1.125 | 14.7 | 1661 | 22756 | 35.8 | 96.4 | 406 |
| 1.000 | 14.6 | 1644 | 22890 | 47.3 | 87.2 | 485 |
| 0.875 | 14.2 | 1605 | 23220 | 60.3 | 75.4 | 535 |
| 0.750 | 13.5 | 1534 | 23810 | 73.4 | 60.9 | 525 |
| 0.625 | 12.6 | 1429 | 24716 | 87.0 | 45.9 | 469 |
| 0.500 | 11.4 | 1308 | 25906 | 99.9 | 31.4 | 368 |
| 0.375 | 10.2 | 1175 | 27340 | 111.8 | 18.6 | 244 |
| 0.250 | 9.2 | 1061 | 28910 | 121.7 | 8.9 | 127 |
| 0.000 | 8.4 | 973 | 30216 | 134.8 | 0.0 | 0 |

METRIC DATA



| Orifice (mm) | Amps | Watts (In) | RPM | Vac (mm H ₂ O) | Flow (L/Sec) | Air Watts |
|--------------|------|------------|-------|---------------------------|--------------|-----------|
| 48.0 | 14.6 | 1654 | 22823 | 144 | 56.9 | 99 |
| 40.0 | 14.7 | 1658 | 22776 | 315 | 53.8 | 178 |
| 30.0 | 14.7 | 1663 | 22756 | 809 | 47.0 | 371 |
| 23.0 | 14.3 | 1615 | 23138 | 1449 | 37.0 | 523 |
| 19.0 | 13.5 | 1532 | 23828 | 1871 | 28.6 | 524 |
| 16.0 | 12.6 | 1433 | 24680 | 2196 | 21.9 | 471 |
| 13.0 | 11.6 | 1320 | 25787 | 2505 | 15.5 | 378 |
| 10.0 | 10.4 | 1195 | 27125 | 2794 | 9.7 | 263 |
| 6.5 | 9.2 | 1067 | 28832 | 3079 | 4.4 | 133 |
| 0.0 | 8.4 | 973 | 30216 | 3424 | 0.0 | 0 |

Note: Metric performance data is calculated from the ASTM data above.

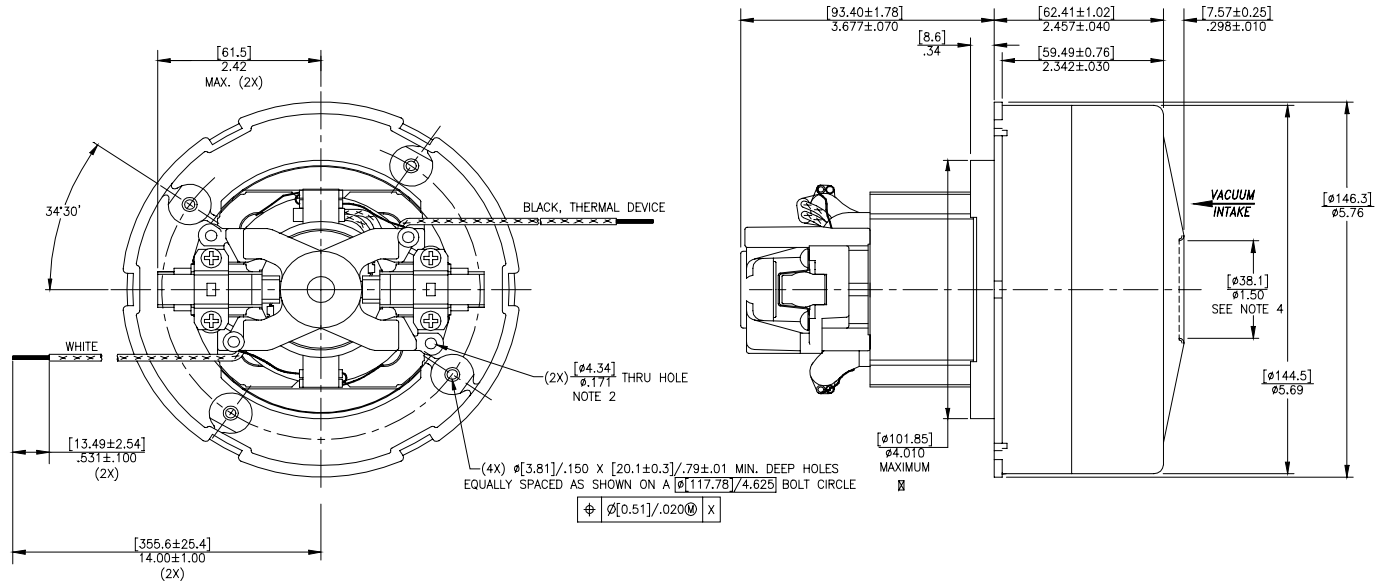
* Data represents performance of a typical motor sampled from a large production quantity. Individual motor data may vary due to normal manufacturing variations.

| | | | | | | | | | |
|--------------------|------|-------------------------------|-------|-----------------|------|------------------------|------|-----------------------|------|
| Test Specs: | 120v | Minimum Sealed Vacuum: | 120.0 | ORIFICE: | 7/8" | Minimum Vacuum: | 57.2 | Maximum Watts: | 1720 |
|--------------------|------|-------------------------------|-------|-----------------|------|------------------------|------|-----------------------|------|

DIMENSIONS

NOTES:

1. LEADS: 18GA STRANDED.
2. GROUNDING OR EARTHING PROVISIONS: USE HOLES AS INDICATED FOR GROUNDING OR EARTHING. REFER TO APPROPRIATE LISTING OR REGULATORY AGENCY FOR PROPER METHOD OF GROUNDING OR EARTHING.
3. MOTOR IDENTIFICATION: MANUFACTURER'S NAME, MODEL NUMBER, VOLTAGE, FREQUENCY, INSPECTOR'S CODE, DATE OF MANUFACTURE, AGENCY RECOGNITION CODE, PLANT LOCATION CODE AND COUNTRY OF ORIGIN.
4. MOUNTING MUST NOT RESTRICT THIS DIAMETER.



IMPORTANT NOTE: Pictorial and dimensional data are subject to change without notice. Contact factory for current revision levels.

WARNING - AMETEK Lamb Electric thru-flow vacuum motors must never be used in applications in which wet or moist conditions are involved, where dry chemicals or other volatile materials are present, or where airflow may be restricted or blocked. Such motors are designed to permit the vacuumed air to pass over the electrical winding to cool it. Thus any foam, liquid (including water), dry chemical, or other foreign substance coming in contact with electrical conductors could cause combustion (depending on volatility) or electrical shock. Failure to observe these precautions could result in property damage and severe personal injury, including death in extreme cases. All applications incorporating Lamb Electric motors should be submitted to Underwriters Laboratories Inc. or other appropriate organizations or agencies for testing specifically related to the safety of your equipment.

AMETEK Lamb Electric
627 Lake Street
Kent, Ohio 44240
U.S.A.
Tel: (330) 673-3786 Fax: (330) 677-3812
www.lambelectric.com