



AMETEK
LAMB ELECTRIC

Product Bulletin

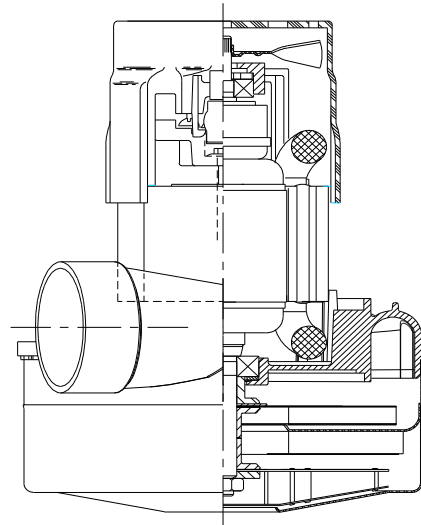
Model: 119711-00

DESCRIPTION

- Two stage
- 230 volts
- 5.7" / 145 mm diameter
- Dual ball bearings
- Single speed
- Tangential bypass discharge
- Aluminum fan end bracket
- Aluminum commutator bracket

DESIGN APPLICATION

- Equipment operating in environments requiring separation of working air from motor ventilating air
- Designed to handle clean, dry, filtered air only



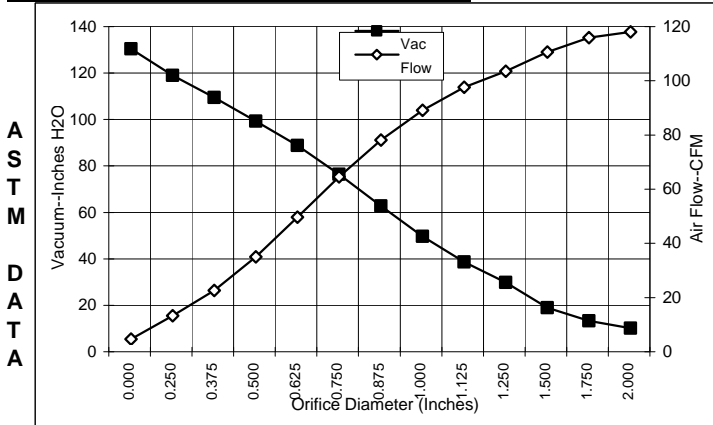
SPECIAL FEATURES

- Suitable for 230 volt AC operation, 50/60 Hz
- UL recognized, category PRGY2 (E47185)
- Provision for grounding
- Skeleton frame design
- Tapered fan system
- The Lamb vacuum motor line offers a wide range of performance levels to meet design needs

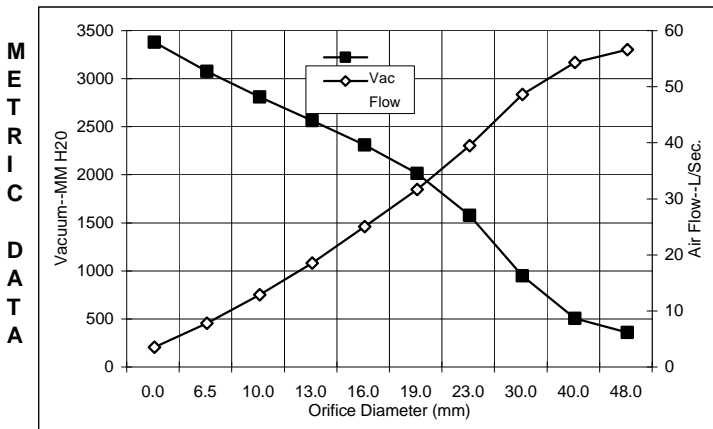


TYPICAL MOTOR PERFORMANCE.*

(At 230 volts, 60Hz, test data is corrected to standard conditions of 29.92 Hg, 68° F.)



Orifice (Inches)	Amps	Watts (In)	RPM	Vac (In.H ₂ O)	Flow (CFM)	Air Watts
2.000	7.1	1581	22,510	4.7	113.4	63
1.750	7.1	1582	22,483	7.8	111.3	103
1.500	7.2	1585	22,496	13.5	106.0	169
1.250	7.2	1586	22,453	24.4	98.8	284
1.125	7.1	1580	22,490	33.2	92.9	362
1.000	7.1	1573	22,566	44.3	84.5	440
0.875	7.0	1545	22,746	57.3	73.5	495
0.750	6.7	1493	23,163	71.0	59.9	499
0.625	6.3	1411	23,840	83.4	45.0	441
0.500	5.9	1311	24,750	93.9	30.4	335
0.375	5.4	1203	25,993	104.1	18.0	220
0.250	4.9	1100	27,256	113.5	8.6	115
0.000	4.5	1026	28,260	125.0	0.0	0



Orifice (mm)	Amps	Watts (In)	RPM	Vac (mm H ₂ O)	Flow (L/Sec)	Air Watts
48.0	7.1	1581	22498	155	53.1	81
40.0	7.1	1584	22492	299	50.8	149
30.0	7.1	1583	22473	743	45.1	327
23.0	7.0	1552	22701	1373	36.0	481
19.0	6.7	1491	23177	1810	28.1	498
16.0	6.3	1414	23813	2106	21.5	443
13.0	5.9	1321	24659	2358	15.0	346
10.0	5.4	1219	25807	2605	9.4	237
6.5	4.9	1105	27193	2871	4.3	120
0.0	4.5	1026	28260	3175	0.0	0

Note: Metric performance data is calculated from the ASTM data above.

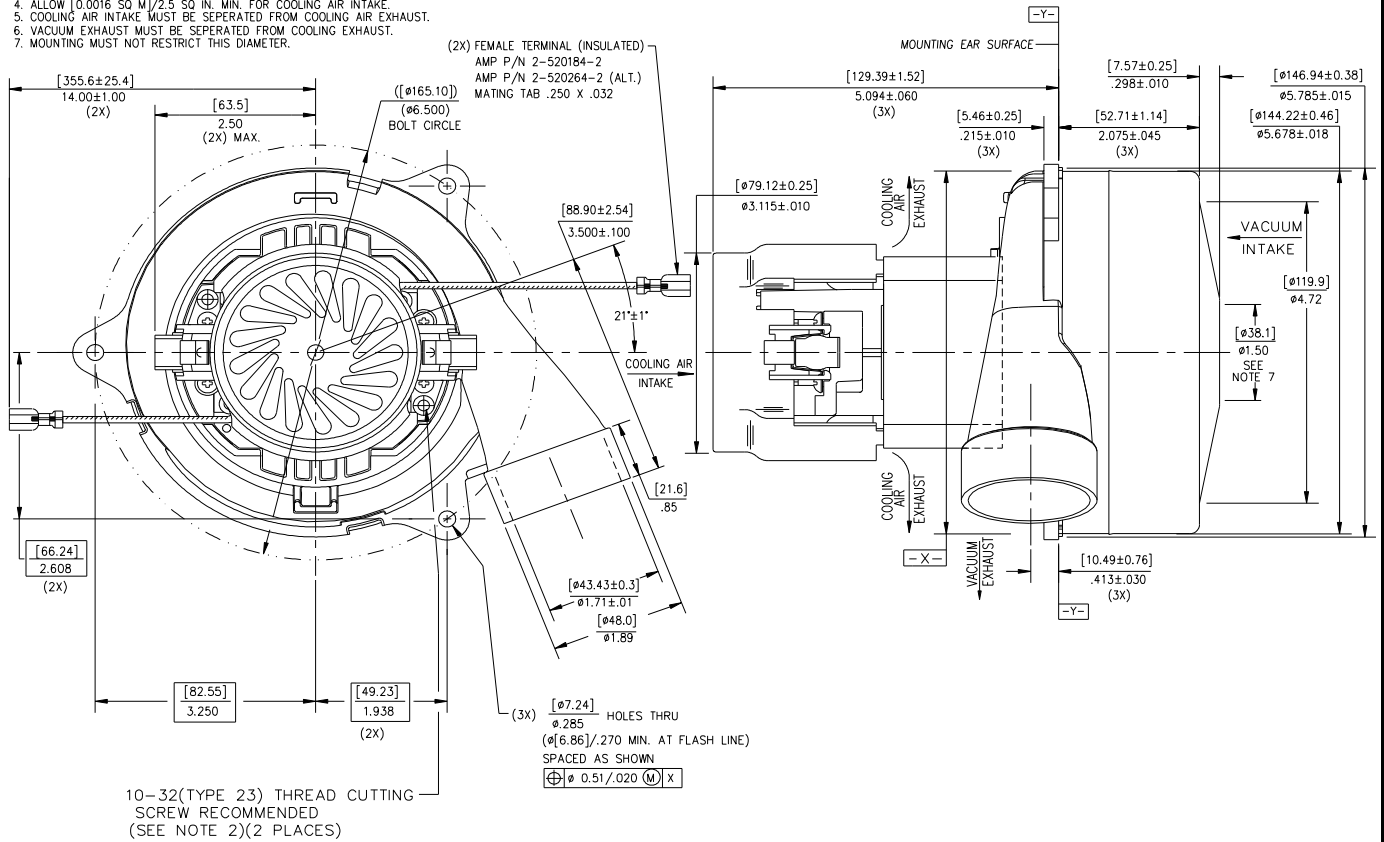
* Data represents performance of a typical motor sampled from a large production quantity. Individual motor data may vary to normal manufacturing variations.

Test Specs:	230 Volts	Minimum Sealed Vacuum:	112.0"	ORIFICE: 7/8"	Minimum Vacuum:	53.0"	Maximum Watts:	1640
--------------------	------------------	-------------------------------	---------------	----------------------	------------------------	--------------	-----------------------	-------------

DIMENSIONS

NOTES:

- LEADS: 18GA STRANDED, LEADS CAN BE ANY COLOR EXCEPT GREEN OR GREEN WITH YELLOW STRIPE.
- GROUNDING OR EARTHING PROVISIONS: USE HOLES AS INDICATED FOR GROUNDING OR EARTHING. REFER TO APPROPRIATE LISTING OR REGULATORY AGENCY FOR PROPER METHOD OF GROUNDING OR EARTHING.
- MOTOR IDENTIFICATION: MANUFACTURER'S NAME, MODEL NUMBER, VOLTAGE, FREQUENCY, INSPECTOR'S CODE, DATE OF MANUFACTURE, AGENCY RECOGNITION CODE, PLANT LOCATION CODE, PATENT INFORMATION "ONE OR MORE OF THE FOLLOWING PATENTS APPLY TO THIS MOTOR: 5482378; 5736805; 4689952; 4684835". AND MADE IN THE USA.
- ALLOW 10.0016 SQ MM/2.5 SQ IN. MIN. FOR COOLING AIR INTAKE.
- COOLING AIR INTAKE MUST BE SEPERATED FROM COOLING AIR EXHAUST.
- VACUUM EXHAUST MUST BE SEPERATED FROM COOLING EXHAUST.
- MOUNTING MUST NOT RESTRICT THIS DIAMETER.



IMPORTANT NOTE: Pictorial and dimensional data are subject to change without notice. Contact factory for current revision levels.

WARNING - When using AMETEK/Lamb Electric bypass motors in machines that come in contact with foam, liquid (including water) of other foreign substances, the machine must be designed and constructed to prevent those substances from reaching the fan system, motor housing and electrical components. Lamb vacuum motors other than hazardous duty models should not be applied in machines that come in contact with dry chemicals or other volatile materials. Failure to observe these precautions could cause flashing (depending on volatility) or electrical shock which could result in property damage and severe bodily injury, including death in extreme cases. All applications incorporating Lamb motors should be submitted to appropriate organizations or agencies for testing specifically related to the safety of your equipment.

AMETEK/Lamb Electric Division
 627 Lake Street
 Kent, Ohio 44240
 U.S.A.
 Tel: (330) 673-3451
 Fax: (330) 673-8994

Ametek GmbH
 P. O. Box 1251
 D-71667 Marbach
 Germany
 Phone: + 49-714-484-9512
 Fax: + 49-714-484-9513

AMETEK/Singapore Private Limited
 10 Ang Mo Kio Street 65
 # 05-12 Techpoint
 Singapore 2056
 Tel: + 65-484-2388
 Fax: + 65-481-6588