



AMETEK
LAMB ELECTRIC

Product Bulletin

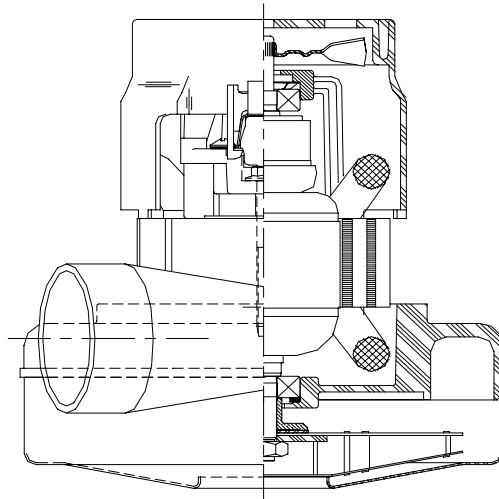
Model: 119561-00

DESCRIPTION

- Single stage
- 230 volts
- 5.7"/ 145 mm diameter
- Dual ball bearings
- Single speed
- Tangential bypass discharge
- Thermoset fan end bracket
- Aluminum commutator bracket

DESIGN APPLICATION

- Equipment operating in environments requiring separation of working air from motor ventilating air
- Designed to handle clean, dry, filtered air only



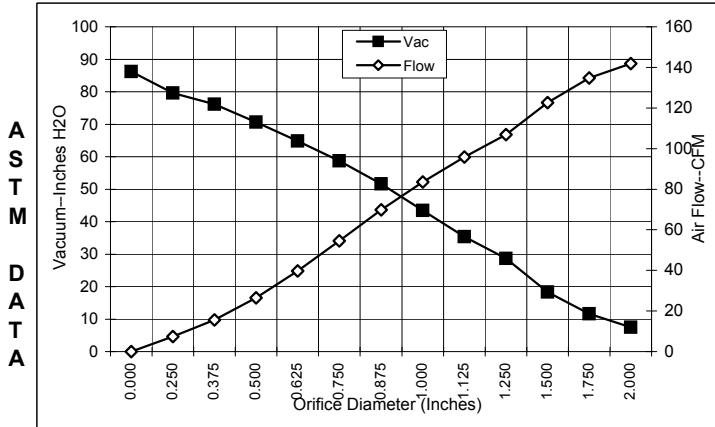
SPECIAL FEATURES

- Suitable for 230 volt AC operation, 50/60 Hz
- UL recognized, category PRGY2 (E47185)
- Provision for grounding
- Skeleton frame design
- Tapered fan system
- The Lamb vacuum motor line offers a wide range of performance levels to meet design needs

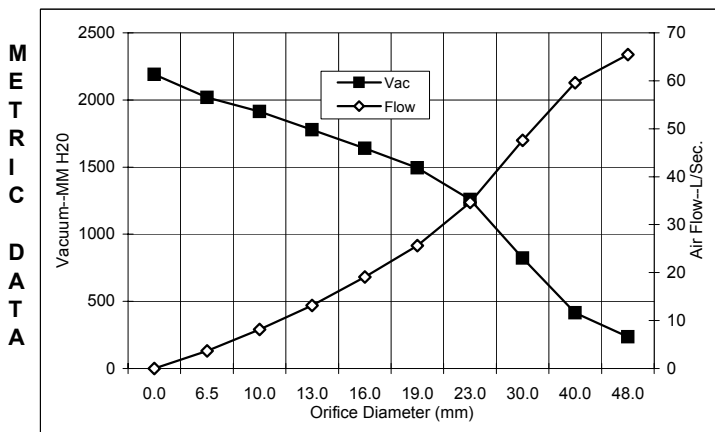


TYPICAL MOTOR PERFORMANCE.*

(At 230 volts, 60Hz, test data is corrected to standard conditions of 29.92 Hg, 68° F.)



Orifice (Inches)	Amps	Watts (In)	RPM	Vac (In.H2O)	Flow (CFM)	Air Watts
2.000	6.5	1429	25990	7.5	141.8	125
1.750	6.6	1439	25920	11.6	134.7	185
1.500	6.6	1449	25775	18.3	122.6	264
1.250	6.6	1437	25915	28.7	106.8	360
1.125	6.5	1408	26135	35.4	95.9	399
1.000	6.3	1372	26545	43.4	83.6	426
0.875	6.0	1321	27060	51.6	69.9	424
0.750	5.7	1260	27750	58.7	54.6	377
0.625	5.4	1187	28610	64.8	39.8	303
0.500	5.0	1103	29690	70.6	26.5	220
0.375	4.6	1011	30825	76.2	15.6	140
0.250	4.3	952	31990	79.6	7.4	69
0.000	4.1	908	32580	86.2	0.0	0



Orifice (mm)	Amps	Watts (In)	RPM	Vac (mm H2O)	Flow (L/Sec)	Air Watts
48.0	6.5	1433	25959	236	65.5	151
40.0	6.6	1446	25819	414	59.6	240
30.0	6.5	1421	26036	823	47.6	381
23.0	6.1	1334	26931	1259	34.6	425
19.0	5.7	1259	27767	1494	25.6	376
16.0	5.4	1190	28576	1640	19.1	306
13.0	5.0	1111	29582	1779	13.1	228
10.0	4.7	1025	30655	1914	8.1	152
6.5	4.3	955	31932	2018	3.7	73
0.0	4.1	908	32580	2189	0.0	0

Note: Metric performance data is calculated from the ASTM data above.

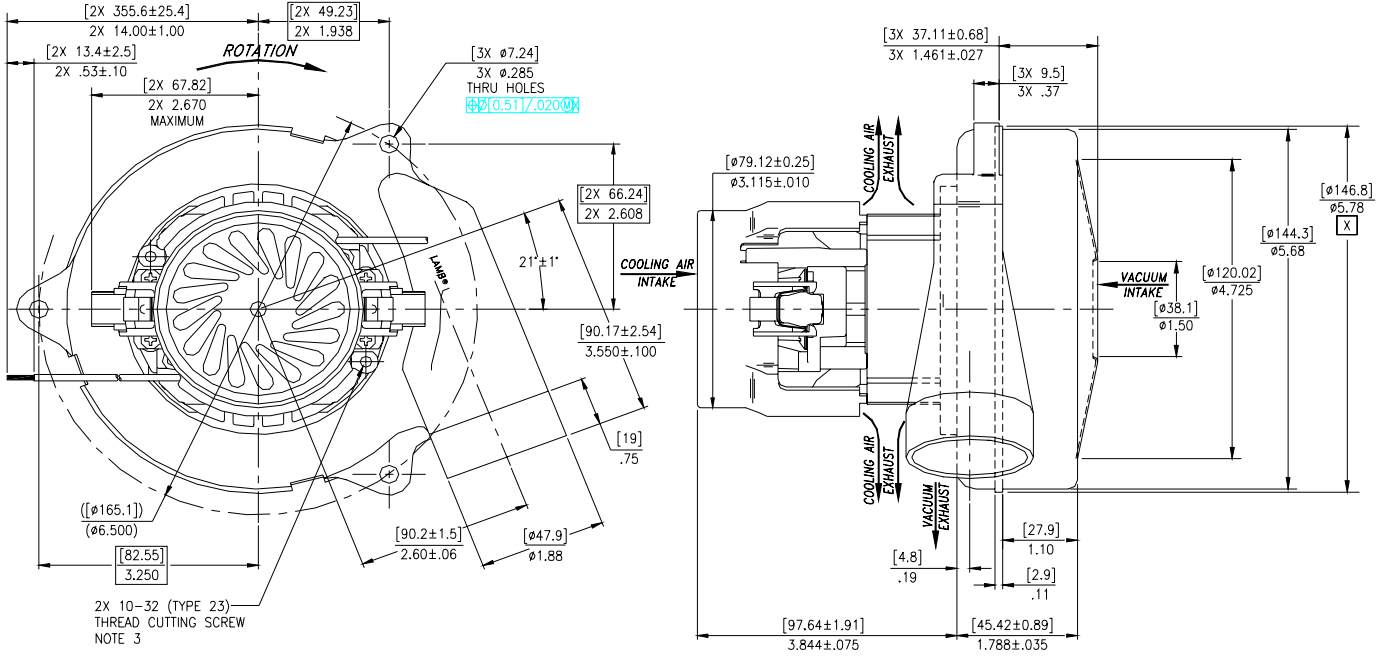
* Data represents performance of a typical motor sampled from a large production quantity. Individual motor data may vary to normal manufacturing variations.

Test Specs:	Minimum Sealed Vacuum: 80.0"	ORIFICE: 7/8"	Minimum Vacuum: 46.0"	Maximum Watts: 1435
--------------------	-------------------------------------	----------------------	------------------------------	----------------------------

DIMENSIONS

NOTES:

1. LEADS: 18 GA. STRANDED. LEADS CAN BE ANY COLOR EXCEPT GREEN OR GREEN WITH YELLOW STRIPE.
2. MOUNTING MUST NOT RESTRICT THIS DIAMETER.
3. GROUNDING OR EARTHING: USE HOLES AS INDICATED FOR GROUNDING OR EARTHING. REFER TO APPROPRIATE LISTING OR REGULATORY AGENCY FOR PROPER METHOD OF GROUNDING OR EARTHING.



NOTES: CONTINUED

4. MANUFACTURER'S NAME, MODEL NUMBER, VOLTAGE, FREQUENCY, INSPECTORS CODE, DATE OF MANUFACTURE, AGENCY RECOGNITION CODE, PLANT LOCATION CODE, PATENT INFORMATION: "ONE OR MORE OF THE FOLLOWING PATENTS APPLY TO THIS MOTOR: 5482378; 5736805; 4669952; 4684835." AND "MADE IN THE USA".
5. ALLOW [0.0016 SQUARE M]/2.5 SQUARE INCHES FOR COOLING AIR INTAKE.
6. VACUUM EXHAUST MUST BE SEPERATED FROM COOLING AIR EXHAUST.
7. COOLING AIR INTAKE MUST BE SEPERATED FROM COOLING AIR EXHAUST.

IMPORTANT NOTE: Pictorial and dimensional data are subject to change without notice. Contact factory for current revision levels.

WARNING - When using AMETEK/Lamb Electric bypass motors in machines that come in contact with foam, liquid (including water) of other foreign substances, the machine must be designed and constructed to prevent those substances from reaching the fan system, motor housing and electrical components. Lamb vacuum motors other than hazardous duty models should not be applied in machines that come in contact with dry chemicals or other volatile materials. Failure to observe these precautions could cause flashing (depending on volatility) or electrical shock which could result in property damage and severe bodily injury, including death in extreme cases. All applications incorporating Lamb motors should be submitted to appropriate organizations or agencies for testing specifically related to the safety of your equipment.

AMETEK/Lamb Electric Division
 627 Lake Street
 Kent, Ohio 44240
 U.S.A.
 Tel: (330) 673-3786 Fax: (330) 677-3812
 www.lambelectric.com