



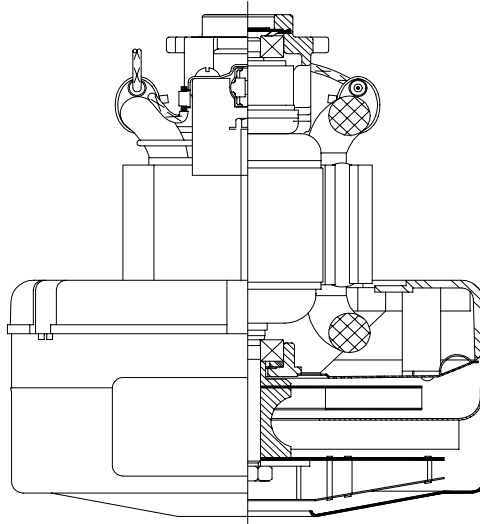
Model: 119522-00

DESCRIPTION

- Two stage
- 24 volt
- 5.7"/145 mm diameter
- Double ball bearings
- Single speed
- High Eff. Tapered fan design
- Thru-flow discharge
- Aluminum fan end bracket
- Thermoset commutator bracket

DESIGN APPLICATION

- Equipment operating in environments not requiring separation of working air from motor ventilating air
- Designed to handle clean, dry, filtered air only

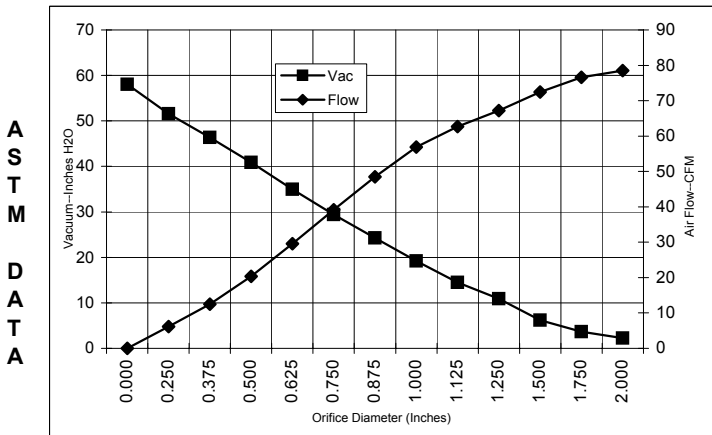


SPECIAL FEATURES

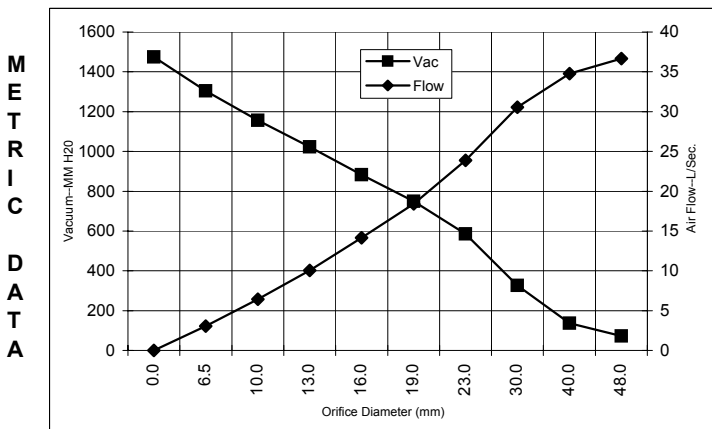
- Suitable for 24 volt D.C. operation
- UL recognized, category PRGY2 (E47185)
- Provision for grounding
- Skeleton-frame design
- The Lamb Electric motor line offers a wide range of performance levels to meet design needs

TYPICAL MOTOR PERFORMANCE.*

(At 24 volts DC, test data is corrected to standard conditions of 29.92 Hg, 68° F.)



Orifice (Inches)	Amps	Watts (In)	RPM	Vac (In.H ₂ O)	Flow (CFM)	Air Watts
2.000	19.3	463	15250	2.2	78.5	21
1.750	19.3	464	15195	3.6	76.6	33
1.500	19.5	468	15180	6.2	72.5	53
1.250	19.5	469	15105	10.9	67.2	86
1.125	19.7	473	15030	14.5	62.7	107
1.000	19.7	473	15070	19.2	56.9	129
0.875	19.4	467	15195	24.3	48.5	139
0.750	19.0	455	15450	29.4	39.2	136
0.625	18.3	438	15935	35.0	29.6	122
0.500	17.4	417	16680	40.8	20.3	98
0.375	16.3	393	17590	46.4	12.5	68
0.250	15.5	372	18515	51.6	6.2	38
0.000	14.8	356	19310	58.0	0.0	0



Orifice (mm)	Amps	Watts (In)	RPM	Vac (mm H ₂ O)	Flow (L/Sec)	Air Watts
48.0	19.3	463	15226	72	36.7	26
40.0	19.4	466	15185	137	34.8	47
30.0	19.6	471	15064	327	30.6	98
23.0	19.5	468	15164	585	23.9	136
19.0	18.9	455	15460	750	18.4	135
16.0	18.3	439	15916	882	14.1	122
13.0	17.4	419	16606	1022	10.0	100
10.0	16.5	396	17454	1157	6.4	73
6.5	15.5	373	18469	1304	3.1	39
0.0	14.8	356	19310	1474	0.0	0

Note: Metric performance data is calculated from the ASTM data above.

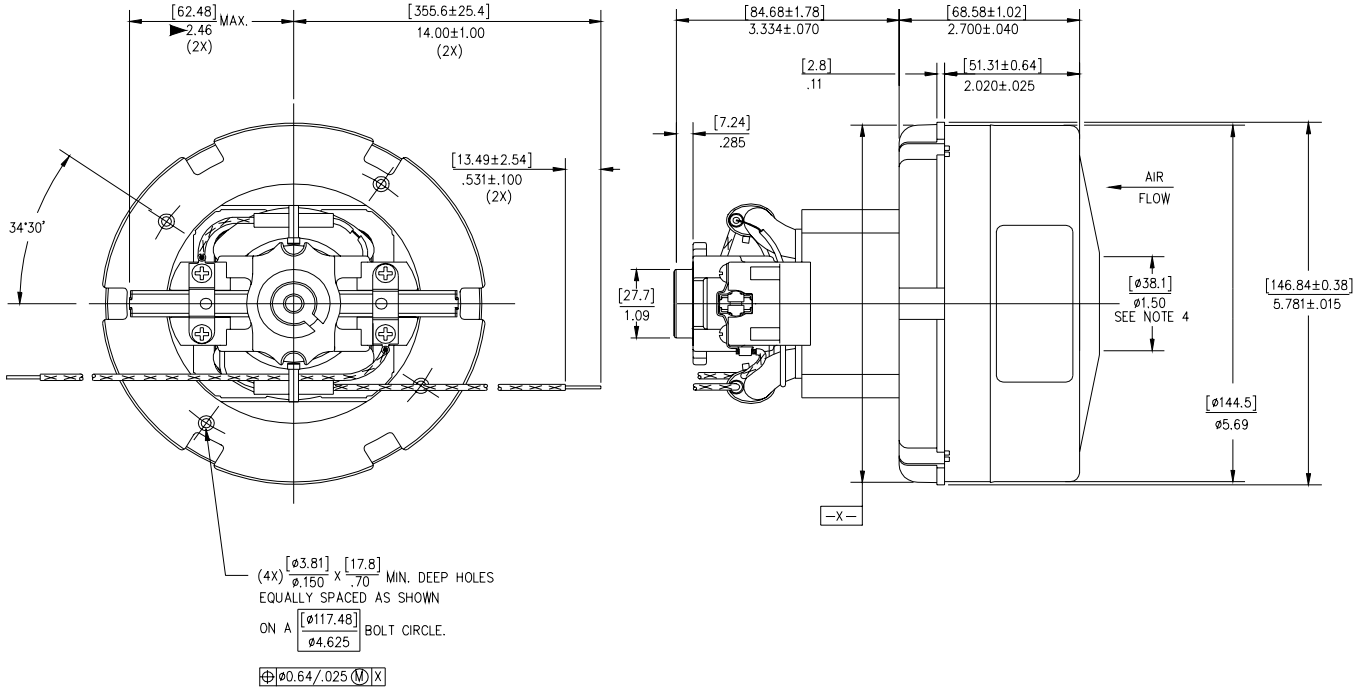
* Data represents performance of a typical motor sampled from a large production quantity. Individual motor data may vary due to normal manufacturing variations.

Test Specs:	24 volts	Minimum Sealed Vacuum:	53.0"	ORIFICE:	7/8 "	Minimum Vacuum:	22.0"	Maximum Watts:	500
--------------------	-----------------	-------------------------------	--------------	-----------------	--------------	------------------------	--------------	-----------------------	------------

DIMENSIONS

NOTES:

1. LEADS: 14 GA STRANDED, LEADS CAN BE ANY COLOR EXCEPT GREEN OR GREEN WITH YELLOW STRIPE.
2. MOTOR IDENTIFICATION: MANUFACTURER'S NAME, MODEL NUMBER, VOLTAGE, FREQUENCY, INSPECTORS CODE, DATE OF MANUFACTURE, AGENCY RECOGNITION CODE, PLANT LOCATION CODE, PATENT INFORMATION ONE OR MORE OF THE FOLLOWING PATENTS APPLY TO THIS MOTOR: 5482378; 5735600; 4669952; 4684835. * AND MADE IN THE USA.
3. RECOMMENDED SCREW SIZE 10-16 TYPE BT OR 25 THREAD CUTTING SCREW. MAXIMUM PENETRATION [17.40]/.685.
4. MOUNTING MUST NOT RESTRICT THIS DIAMETER.



IMPORTANT NOTE: Pictorial and dimensional data are subject to change without notice. Contact factory for current revision levels.

WARNING - AMETEK Lamb Electric thru-flow vacuum motors must never be used in applications in which wet or moist conditions are involved, where dry chemicals or other volatile materials are present, or where airflow may be restricted or blocked. Such motors are designed to permit the vacuumed air to pass over the electrical winding to cool it. Thus any foam, liquid (including water), dry chemical, or other foreign substance coming in contact with electrical conductors could cause combustion (depending on volatility) or electrical shock. Failure to observe these precautions could result in property damage and severe personal injury, including death in extreme cases. All applications incorporating Lamb Electric motors should be submitted to Underwriters Laboratories Inc. or other appropriate organizations or agencies for testing specifically related to the safety of your equipment.

AMETEK/Lamb Electric Division
627 Lake Street
Kent, Ohio 44240
U.S.A.
Tel: (330) 673-3786 Fax: (330) 677-3812
www.lambelectric.com