

## LAMB ELECTRIC

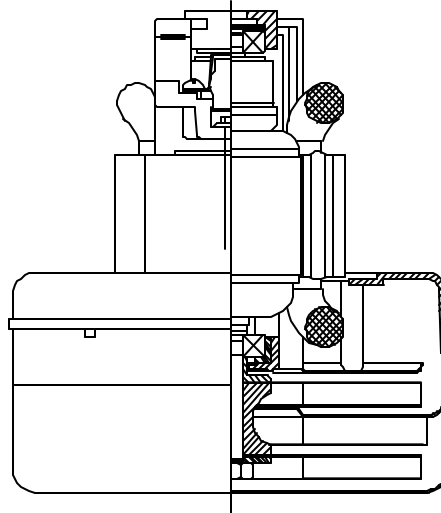
**Model: 116227-00**

### DESCRIPTION

- Two stage
- 120 volts
- 5.7"/145 mm diameter
- Double ball bearings
- Two speed
- Thru-flow discharge
- Aluminum fan end bracket
- Aluminum commutator bracket

### DESIGN APPLICATION

- Equipment operating in environments not requiring separation of working air from motor ventilating air
- Designed to handle clean, dry, filtered air only

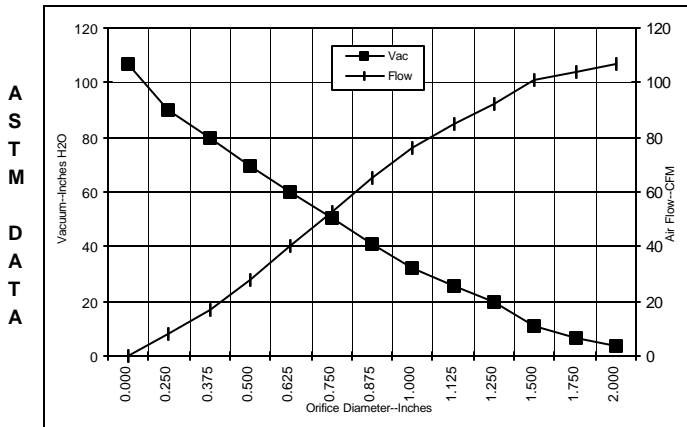


### SPECIAL FEATURES

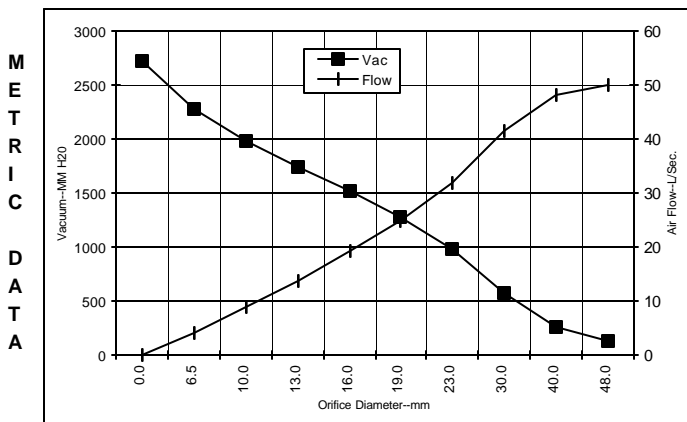
- Suitable for 120 volt AC operation, 50/60 Hz
- UL recognized, category PRGY2 (E47185)
- CSA certified, class 1611 01 (LR31393)
- Provision for grounding
- Skeleton-frame design
- The Lamb Electric vacuum motor line offers a wide range of performance levels to meet design needs

### TYPICAL MOTOR PERFORMANCE.\*

(At 120 volts, 60Hz, test data is corrected to standard conditions of 29.92 Hg, 68° F.)



Orifice (Inches)	Amps	Watts (In)	RPM	Vac (In.H <sub>2</sub> O)	Flow (CFM)	Air Watts
2.000	8.6	1010	19500	4.0	107.0	51
1.750	8.7	1012	19400	6.5	104.0	80
1.500	8.7	1018	19275	11.3	101.0	133
1.250	8.8	1033	19225	19.4	92.0	210
1.125	8.8	1033	19225	25.5	85.0	256
1.000	8.7	1018	19275	32.5	76.0	291
0.875	8.5	994	19575	40.8	65.0	313
0.750	8.2	957	20100	50.4	53.0	316
0.625	7.7	895	20775	59.8	40.0	284
0.500	7.0	830	21800	69.2	28.0	226
0.375	6.4	754	23025	79.5	17.0	157
0.250	5.7	684	24575	90.1	8.0	84
0.000	5.4	635	26000	106.9	0.0	0



Orifice (mm)	Amps	Watts (In)	RPM	Vac (mm H <sub>2</sub> O)	Flow (L/Sec)	Air Watts
48.0	8.6	1011	19456	130	49.9	64
40.0	8.7	1016	19313	250	48.1	117
30.0	8.8	1033	19225	578	41.6	235
23.0	8.6	1000	19500	984	32.0	308
19.0	8.2	956	20114	1285	24.9	315
16.0	7.7	897	20748	1509	19.1	285
13.0	7.1	837	21698	1734	13.8	232
10.0	6.5	765	22841	1980	8.8	167
6.5	5.7	688	24498	2275	4.0	88
0.0	5.4	635	26000	2715	0.0	0

Note: Metric performance data is calculated from the ASTM data above.

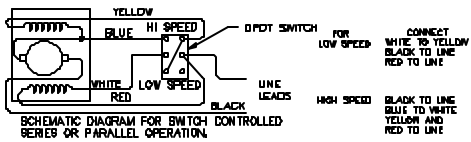
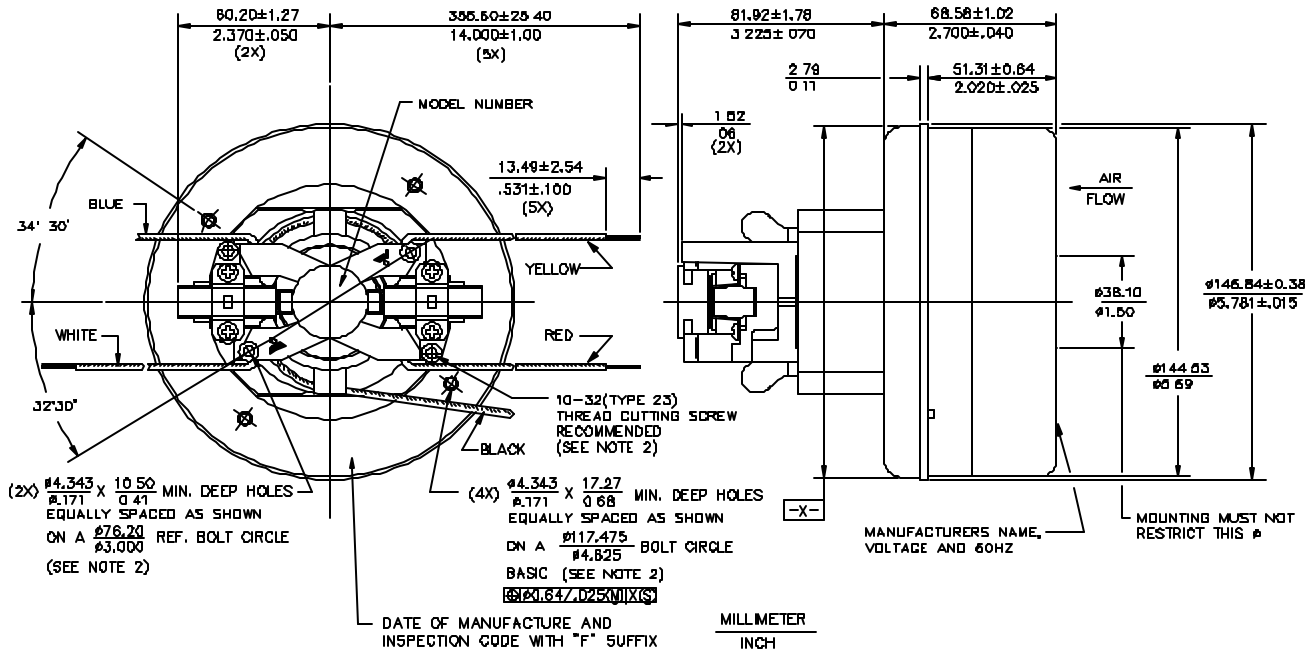
\* Data represents performance of a typical motor sampled from a large production quantity. Individual motor data may vary due to normal manufacturing variability.

Test Specs:	120 volts	Minimum Sealed Vacuum:	90.0"	ORIFICE:	7/8 "	Minimum Vacuum:	66.0"	Maximum Watts:	1100
-------------	-----------	------------------------	-------	----------	-------	-----------------	-------	----------------	------

**DIMENSIONS**

**NOTES**

1. LEADS: 18GA. STRANDED.
2. GROUNDING OR EARTHING PROVISIONS: USE HOLES AS INDICATED FOR GROUNDING OR EARTHING REFER TO APPROPRIATE LISTING OR REGULATORY AGENCY FOR PROPER METHOD OF GROUNDING OR EARTHING.



**IMPORTANT NOTE:** Pictorial and dimensional data are subject to change without notice. Contact factory for current revision levels.

**WARNING -** AMETEK Lamb Electric thru-flow vacuum motors must never be used in applications in which wet or moist conditions are involved, where dry chemicals or other volatile materials are present, or where airflow may be restricted or blocked. Such motors are designed to permit the vacuumed air to pass over the electrical winding to cool it. Thus any foam, liquid (including water), dry chemical, or other foreign substance coming in contact with electrical conductors could cause combustion (depending on volatility) or electrical shock. Failure to observe these precautions could result in property damage and severe personal injury, including death in extreme cases. All applications incorporating Lamb Electric motors should be submitted to Underwriters Laboratories Inc or other appropriate organizations or agencies for testing specifically related to the safety of your equipment.

**AMETEK/Lamb Electric Division**  
 627 Lake Street  
 Kent, Ohio 44240  
 U.S.A.  
 Tel: (330) 673-3451  
 Fax: (330) 673-8994

**Ametek GmbH**  
 Weillimdorfer Str. 47  
 D-70825 Korntal-Munchingen  
 Germany  
 Phone: + 49-711-838-7876  
 Fax: + 49-711-838-7862

**AMETEK/Singapore Private Limited**  
 10 Ang Mo Kio Street 65  
 # 05-12 Techpoint  
 Singapore 2056  
 Tel: + 65-484-2388  
 Fax: + 65-481-6588