

AMETEK

**LAMB®
VACUUM
MOTORS,
BLOWERS**

MODEL 115537

technical bulletin

2-VB572-5537†

Issued: 4/1/77

Supersedes: 12/15/72

DESCRIPTION

TYPE: Two Stage, Single Speed, Bypass, 36 Volt DC.

DESIGN APPLICATION: Equipment operating in environments which require separation of working air from motor ventilating air. Designed to handle clean air only. For additional application information, write for Bulletin 2-VBG-000.

SPECIAL FEATURES:

- Component recognized by Underwriters Laboratories Inc.
- Full frame construction.
- Provision for grounding.
- Designed for 36 volt DC operation.
- Well suited for battery operated applications.

The Lamb vacuum motor line offers a wide range of performance levels to meet design needs.



TYPICAL CHARACTERISTICS*

(Not to be used for setting specifications)

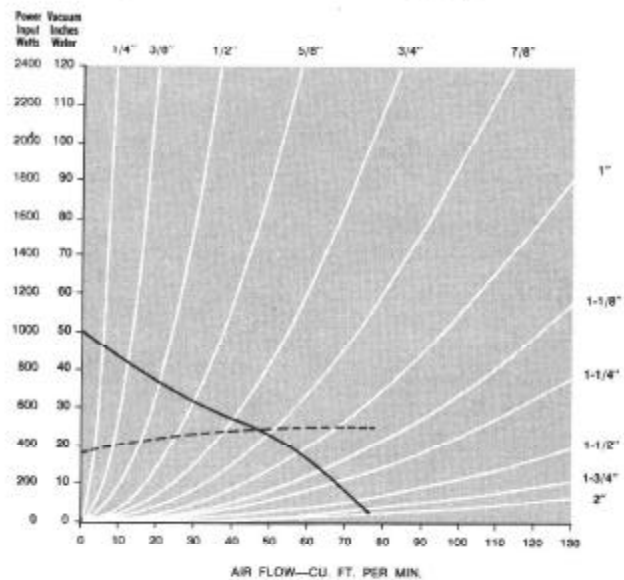
@ 36 VOLTS—DC Standard Conditions: 29.92 Inches Hg, 68°F		MODEL NUMBER 115537
Sealed	Vacuum (Inches H ₂ O) Volume (CFM) Power (Watts) Current (Amps) Speed (RPM)	50.0 0 360 9.9 16,700
3/8" Orifice	Vacuum (Inches H ₂ O) Volume (CFM) Power (Watts) Current (Amps) Speed (RPM)	23.0 49.0 490 13.2 13,500
1/4" Orifice	Vacuum (Inches H ₂ O) Volume (CFM) Power (Watts) Current (Amps) Speed (RPM)	10.0 66.0 500 13.4 13,500
2" Orifice	Vacuum (Inches H ₂ O) Volume (CFM) Power (Watts) Current (Amps) Speed (RPM)	1.9 73.0 490 13.0 13,800

MOTOR PERFORMANCE*

Average test data corrected to standard barometer of 29.92 in. Hg. and 68°F.

LEGEND

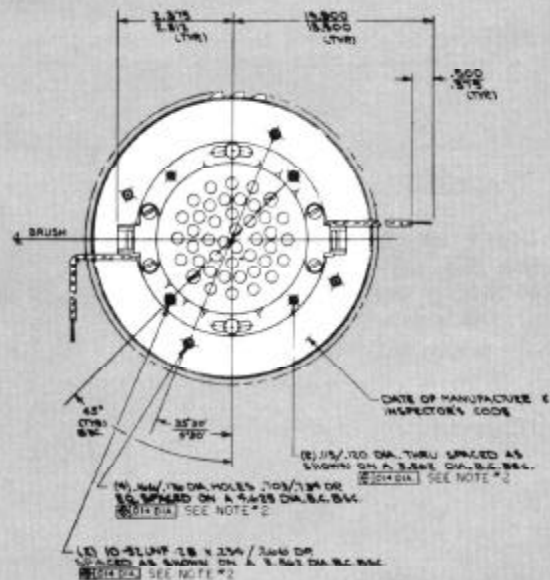
Watts -----
Vacuum —————



Note: Curves marked with fractional inch designations indicate air flow and vacuum through sharp-edged thin plate test orifices of diameter indicated.

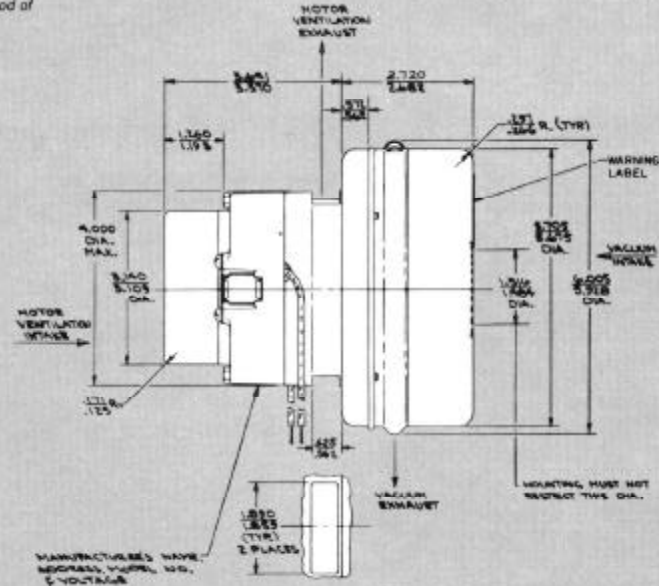
*The performance data specified represents a typical or average motor. If data is required to establish acceptance specifications, contact the factory.

DIMENSIONS— MODEL 115537



NOTES:

1. Leads, #14 Ga., stranded, black
2. Grounding or Earthing Provisions: Use holes as indicated for grounding or earthing. Refer to appropriate listing or regulatory agency for proper method of grounding or earthing.



WARNING—When using AMETEK, Inc., Lamb Electric bypass vacuum motors in machines that come in contact with foam, liquid (including water) or other foreign substances, the machine must be designed and constructed to prevent those substances from reaching the fan system, motor housing and electrical components. Lamb vacuum motors other than hazardous duty models should not be applied in machines that come in contact with dry chemicals or other volatile materials. Failure to observe these precautions could cause flashing (depending on volatility) or electrical shock which could result in property damage and severe bodily injury, including death in extreme cases. All applications incorporating Lamb motors should be submitted to Underwriters Laboratories, Inc. or other appropriate organizations or agencies for testing specifically related to the safety of your equipment.

AMETEK

LAMB ELECTRIC DIVISION • 627 LAKE STREET, KENT, OHIO 44240
 TELEPHONE: (216) 673-3451 TELE: 986497 CABLE: LAMETEK