

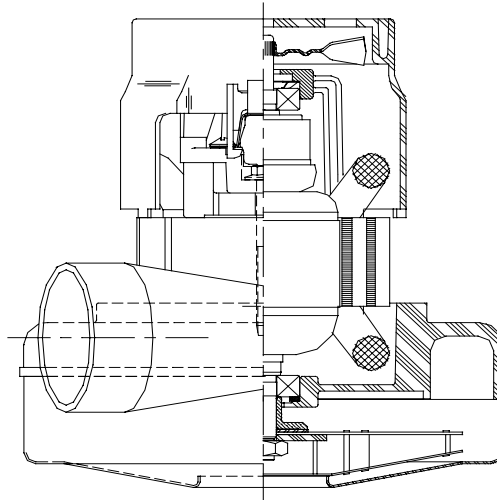


DESCRIPTION

- Single stage
- 120 volts
- 5.7"/ 145 mm diameter
- Dual ball bearings
- Single speed
- Tangential bypass discharge
- Thermost fan end bracket
- Aluminum commutator bracket

DESIGN APPLICATION

- Equipment operating in environments requiring separation of working air from motor ventilating air
- Designed to handle clean, dry, filtered air only

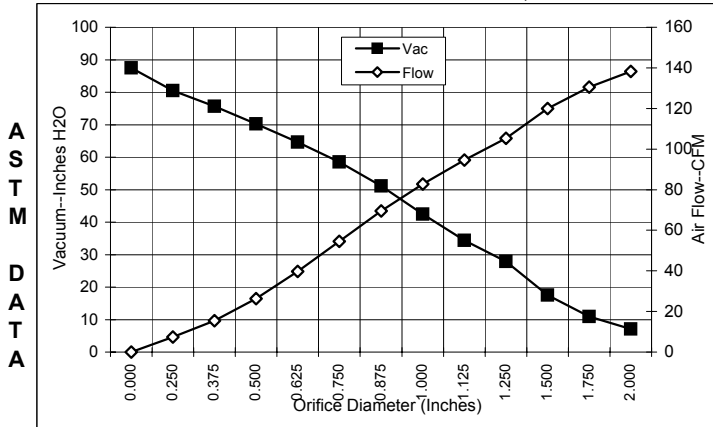


SPECIAL FEATURES

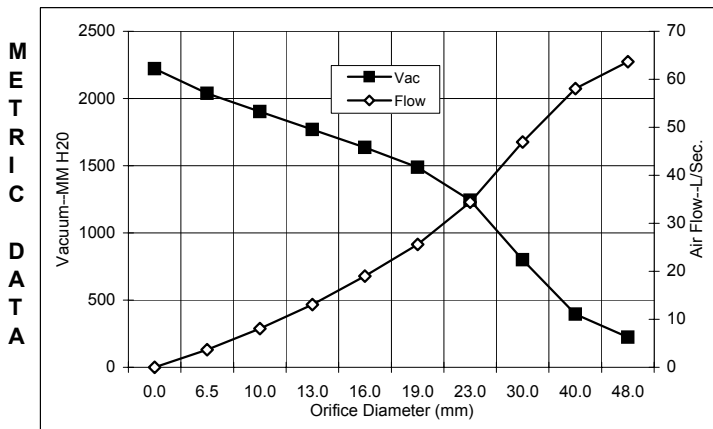
- Suitable for 120 volt AC operation, 50/60 Hz
- UL recognized, category PRGY2 (E47185)
- Provision for grounding
- Skeleton frame design
- Tapered fan system
- The Lamb vacuum motor line offers a wide range of performance levels to meet design needs

TYPICAL MOTOR PERFORMANCE.*

(At 120 volts, 60Hz, test data is corrected to standard conditions of 29.92 Hg, 68° F.)



Orifice (Inches)	Amps	Watts (In)	RPM	Vac (In.H ₂ O)	Flow (CFM)	Air Watts
2.000	12.8	1471	26190	7.1	138.3	116
1.750	12.8	1473	26120	10.9	130.5	168
1.500	12.9	1488	26025	17.5	119.9	246
1.250	12.8	1474	26090	27.9	105.3	345
1.125	12.6	1450	26360	34.4	94.6	383
1.000	12.2	1411	26770	42.5	82.8	413
0.875	11.8	1363	27200	51.1	69.5	418
0.750	11.2	1297	27930	58.5	54.5	374
0.625	10.5	1223	28890	64.6	39.7	302
0.500	9.8	1141	29890	70.2	26.4	218
0.375	9.0	1056	31075	75.7	15.5	138
0.250	8.5	988	32230	80.5	7.4	70
0.000	8.0	938	33095	87.5	0.0	0



Orifice (mm)	Amps	Watts (In)	RPM	Vac (mm H ₂ O)	Flow (L/Sec)	Air Watts
48.0	12.8	1472	26159	223	63.7	139
40.0	12.9	1484	26054	394	58.1	223
30.0	12.7	1461	26239	799	46.9	366
23.0	11.9	1375	27093	1243	34.4	417
19.0	11.2	1296	27949	1489	25.6	373
16.0	10.5	1226	28852	1635	19.0	305
13.0	9.9	1149	29790	1769	13.1	226
10.0	9.1	1069	30897	1902	8.1	150
6.5	8.5	991	32172	2039	3.7	73
0.0	8.0	938	33095	2223	0.0	0

Note: Metric performance data is calculated from the ASTM data above.

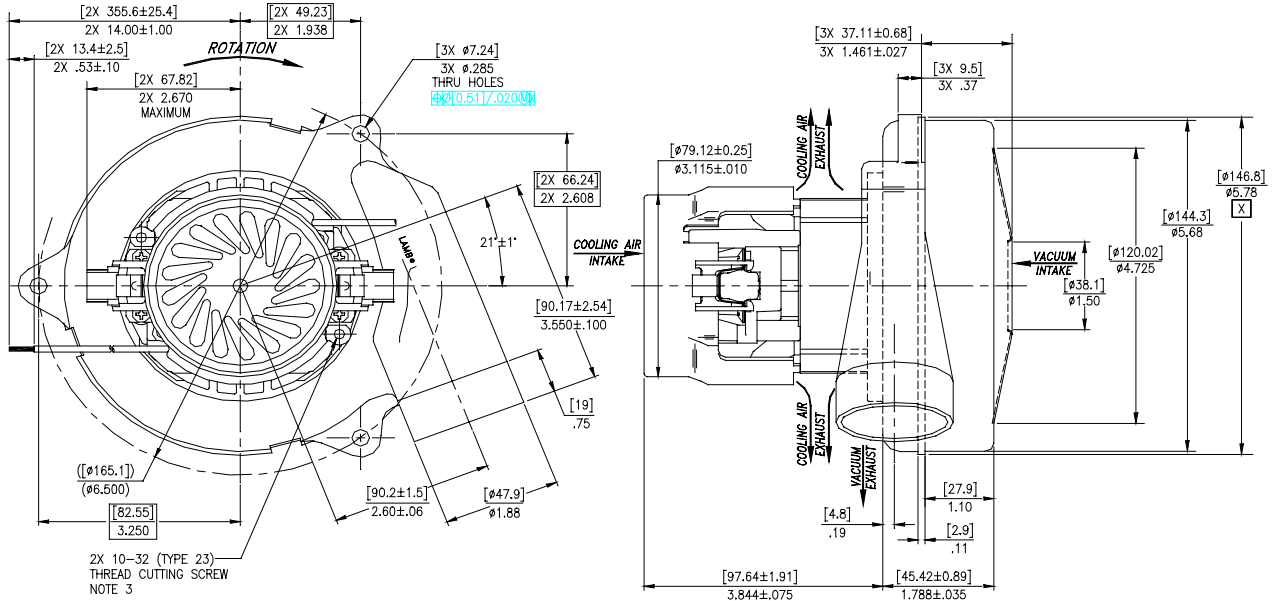
* Data represents performance of a typical motor sampled from a large production quantity. Individual motor data may vary to normal manufacturing variations.

Test Specs:	Minimum Sealed Vacuum: 76.0"	ORIFICE: 7/8"	Minimum Vacuum: 46.0"	Maximum Watts: 1420
-------------	------------------------------	---------------	-----------------------	---------------------

DIMENSIONS

NOTES:

- LEADS: 18 GA. STRANDED. LEADS CAN BE ANY COLOR EXCEPT GREEN OR GREEN WITH YELLOW STRIPE.
- MOUNTING MUST NOT RESTRICT THIS DIAMETER.
- GROUNDING OR EARTHING: USE HOLES AS INDICATED FOR GROUNDING OR EARTHING. REFER TO APPROPRIATE LISTING OR REGULATORY AGENCY FOR PROPER METHOD OF GROUNDING OR EARTHING.



NOTES: CONTINUED

- MANUFACTURER'S NAME, MODEL NUMBER, VOLTAGE, FREQUENCY, INSPECTOR'S CODE, DATE OF MANUFACTURE, AGENCY RECOGNITION CODE, PLANT LOCATION CODE, PATENT INFORMATION: "ONE OR MORE OF THE FOLLOWING PATENTS APPLY TO THIS MOTOR: 5482378; 5736805; 4669952; 4684835." AND "MADE IN THE USA".
- ALLOW [0.0016 SQUARE M]/2.5 SQUARE INCHES FOR COOLING AIR INTAKE.
- VACUUM EXHAUST MUST BE SEPERATED FROM COOLING AIR EXHAUST.
- COOLING AIR INTAKE MUST BE SEPERATED FROM COOLING AIR EXHAUST.

IMPORTANT NOTE: Pictorial and dimensional data are subject to change without notice. Contact factory for current revision levels.

WARNING - When using AMETEK/Lamb Electric bypass motors in machines that come in contact with foam, liquid (including water) of other foreign substances, the machine must be designed and constructed to prevent those substances from reaching the fan system, motor housing and electrical components. Lamb vacuum motors other than hazardous duty models should not be applied in machines that come in contact with dry chemicals or other volatile materials. Failure to observe these precautions could cause flashing (depending on volatility) or electrical shock which could result in property damage and severe bodily injury, including death in extreme cases. All applications incorporating Lamb motors should be submitted to appropriate organizations or agencies for testing specifically related to the safety of your equipment.

AMETEK/Lamb Electric Division
627 Lake Street
Kent, Ohio 44240
U.S.A.
Tel: (330) 673-3451
Fax: (330) 673-8994

Ametek GmbH
P. O. Box 1251
D-71667 Marbach
Germany
Phone: + 49-714-484-9512
Fax: + 49-714-484-9513

AMETEK/Singapore Private Limited
10 Ang Mo Kio Street 65
05-12 Techpoint
Singapore 2056
Tel: + 65-484-2388
Fax: + 65-481-6588